

MOUNTING & LENGTH SPECIFICATIONS

Part No.	Part Type	STRUT BODY		END CODE		LENGTHS			Spring (Rate)	Parts Pack(s)
		Type	Length	Upper	Lower	Comp.	Ext.	Trav.		
39114	Shock	—	—	S1	CLEV	15.31"	21.86"	6.55"	—	P01718,P00590
39129	Shock	—	—	S7	LS25	20.23"	28.27"	8.04"	—	P01682
39130	Shock	—	—	S1	LS30	16.06"	23.23"	7.17"	—	P00522
39131	Shock	—	—	S2	LS43	17.34"	20.79"	3.45"	—	None
39132	Shock	—	—	S2	LS43	17.34"	20.79"	3.45"	—	None
39133	Shock	—	—	S2	LS45	16.96"	21.93"	5.33"	—	None
39134†	Strut	B3	15.76"	—	—	16.13"	20.56"	4.43"	—	None
39135†	Strut	B3	17.16"	—	—	17.16"	22.15"	4.99"	—	None
39136	Shock	—	—	S1	XP15	17.21"	22.6"	5.39"	—	P01716
39137	Shock	—	—	S2	L5	10.59"	15.98"	5.39"	—	P01741
39138	Strut	B9	15.29"	—	—	15.79"	23.46"	7.67"	—	None
39139	Strut	B9	15.29"	—	—	15.79"	23.46"	7.67"	—	None
39140	Strut	SS2	13.39"	—	—	13.89"	17.12"	3.23"	—	P01415
40004	Shock	—	—	S4	LS38	13.63"	18"	4.38"	—	P01136
40005	Shock	—	—	S4	XP7	13.5"	18"	4.5"	—	P01135,P00941
40006	Shock	—	—	XP7	LS26	15"	24"	9"	—	P00941
40007	Shock	—	—	XP7	LS26	15"	24"	9"	—	P00941
40034	Shock	—	—	LS43	LS43	15.25"	22.75"	7.5"	—	None
40035	Shock	—	—	S1	LS42	10.88"	15.38"	4.5"	—	None
40036	Shock	—	—	LS43	LS43	15.63"	23.88"	8.25"	—	None
40038	Shock	—	—	S1	SPEC	11"	15.38"	4.38"	—	None
40039	Shock	—	—	LS43	LS43	15.63"	23.88"	8.25"	—	None
40040	Shock	—	—	LS43	LS43	16.88"	25.63"	8.75"	—	None
40044	Shock	—	—	S1	SPEC	11"	15.38"	4.38"	—	None
40046	Shock	—	—	S6	SPEC	13.33"	18.65"	5.32"	—	P01482
40047	Strut	B4	12.25"	S2	XP16	12.75"	17.16"	4.41"	—	None
40048	Strut	B4	12.25"	S2	XP15	12.75"	17.16"	4.41"	—	None
40049	Strut	B4	12.25"	S2	XP15	12.75"	17.16"	4.41"	—	None
40050	Shock	—	—	LS74	LS74	15.38"	22.75"	7.37"	—	None
40051	Shock	—	—	LS74	LS74	15.38"	22.75"	7.37"	—	None
40052	Shock	—	—	LS74	LS74	15.38"	22.75"	7.37"	—	None
40055	Shock	—	—	S1	CLEV	15"	21.88"	6.88"	—	P01431
40056	Shock	—	—	S1	CLEV	15"	21.88"	6.88"	—	P01431
40201	Shock	—	—	LS77	LS77	11.63"	17.88"	6.25"	—	None
40202	Shock	—	—	LS28	LS28	11.63"	17.88"	6.25"	—	None
40209	Shock	—	—	LS43	LS43	14.88"	22.88"	8"	—	None
40210	Shock	—	—	LS43	LS43	14.88"	22.88"	8"	—	None
40211	Shock	—	—	S1	SPEC	18.25"	24.38"	6.13"	—	None
40212	Shock	—	—	S1	LS72	17.71"	24.48"	6.77"	—	None
55609†	Shock	—	—	S4	LS27	18.3"	22.05"	3.75"	—	P01744
55637†	Shock	—	—	S15	SPEC	16.54"	20.95"	4.41"	—	P01488
55778†	Shock	—	—	S4	LS92	11.45"	17.77"	6.32"	—	P01417
55779	Shock	—	—	LS30	LS92	10.49"	16.04"	5.55"	—	None
55780	Shock	—	—	LS30	LS92	11.37"	17.67"	6.3"	—	None
55783†	Shock	—	—	S4	LS32	12.46"	20.03"	7.57"	—	P01136
55801	Shock	—	—	S4	XP7	9.25"	14.5"	5.25"	—	P01134
55802	Shock	—	—	XP4	L1/CP3	12.69"	20.76"	8.07"	—	P00576
55803	Shock	—	—	S4	L1/CP1	12.63"	21.25"	8.63"	—	P00576,P01134
55804	Shock	—	—	S4	XP4	8.63"	13.38"	4.75"	—	P01134
55809†	Shock	—	—	S4	SP	9.13"	13.63"	4.5"	—	P00423,P01136
55815	Shock	—	—	S4	LS19	8.68"	13.37"	4.69"	—	P01134
55818	Shock	—	—	S4	L1/CP3	11.63"	19.38"	7.75"	—	P00576,P01134
55820	Shock	—	—	XP7	L1/CP1	14.13"	23.88"	9.75"	—	P00576
55829	Shock	—	—	S4	S4	7.13"	10.63"	3.5"	—	P01135
55831	Shock	—	—	XP7	S4	12.25"	20.38"	8.13"	—	P01137
55837	Shock	—	—	LS28	S4	11.25"	18.5"	7.25"	—	P1134
55840	Shock	—	—	S4	XP4	8.75"	13.25"	4.5"	—	P01134
55843†	Shock	—	—	LS48	LS47	10.25"	12.75"	2.5"	—	None
55845†	Shock	—	—	S4	LS26	12.13"	19.75"	7.63"	—	P01136
55847	Shock	—	—	S4	L1/CP1	12.25"	20.38"	8.13"	—	P00576,P01136
55854†	Shock	—	—	S4	L1	12.13"	20"	7.88"	—	P01134

† Bumper Stop Unit. Dimension Shown at Bumper Contact

‡ Hydraulic Lockout Unit. Dimension Shown is Metal-to-Metal, Subtract Approximately 5/8" (.62) from the Extended Length for Start-of-Engagement.

MOUNTING & LENGTH SPECIFICATIONS

Part No.	Part Type	STRUT BODY		END CODE		LENGTHS			Spring (Rate)	Parts Pack(s)
		Type	Length	Upper	Lower	Comp.	Ext.	Trav.		
55861†	Shock	—	—	S4	LS26	14.13"	23.63"	9.5"	—	P1136
55864†	Shock	—	—	LS7	LS7	13.38"	21.5"	8.13"	—	None
55867†	Shock	—	—	S4	L1/CP1	11.63"	18.75"	7.13"	—	P01134,P00576
55868†	Shock	—	—	LS26	LS30	12.25"	17.38"	5.13"	—	None
55892†	Shock	—	—	S4	XP7	10.5"	13.88"	3.38"	—	P1134
55893	Shock	—	—	LS29	LS52	9.5"	14.38"	4.88"	—	None
55897†	Shock	—	—	S4	LS7	16.13"	21.25"	5.13"	—	P01134
55906	Shock	—	—	S4	XP7	9.25"	14.63"	5.38"	—	P01134
55921†	Shock	—	—	XP7	LS4	8.75"	12.38"	3.63"	—	None
55928	Shock	—	—	S4	LS83	14.38"	24"	9.63"	—	P01134
55930†	Shock	—	—	LS32	LS32	11.88"	18.38"	6.5"	—	None
55931	Shock	—	—	XP7	LS14	12.88"	21.38"	8.5"	—	P436
55936	Shock	—	—	S4	XP7	12.13"	20.38"	8.25"	—	P01136 & P00941
55947†	Shock	—	—	S4	LS27	14.5"	21.75"	7.25"	—	P1180
55948†	Shock	—	—	LS7	LS7	14"	22.75"	8.75"	—	None
55950†	Shock	—	—	S4	LS92	11.88"	19.13"	7.25"	—	P1136
55960†	Shock	—	—	S4	XP4	9.13"	13.75"	4.63"	—	P01136
55961†	Shock	—	—	S4	L1/CP1	12.13"	19.5"	7.38"	—	P01136,P00576
55965†	Shock	—	—	S4	LS92	14.5"	19.13"	4.63"	—	P01136
55966†	Shock	—	—	XP7	L1/CP1	13.13"	21.25"	8.13"	—	P00941,P00576
55967†	Shock	—	—	S4	L1/CP1	12.13"	19.5"	7.38"	—	P01136,P00576
55968†	Shock	—	—	S4	LS26	14.5"	19.13"	4.63"	—	P01136
55969†	Shock	—	—	S4	XP7	9.13"	13.75"	4.63"	—	P01136
55970†	Shock	—	—	S4	SPEC	11.38"	18.63"	7.25"	—	P01180,P01181
55971	Shock	—	—	S4	SPEC	15"	21"	6"	—	P01136,P01401
55972†	Shock	—	—	S4	LS2	13.88"	19"	5.13"	—	P1137
55984	Shock	—	—	S1	LS7	16.46"	25.79"	9.33"	—	None
55985	Shock	—	—	S4	LS38	15.72"	24.68"	8.96"	—	P01134
55989†	Shock	—	—	LS84	LS26	11.55"	18.44"	6.89"	—	None
55993†	Shock	—	—	S4	LS34	12.45"	20.15"	7.7"	—	P01136
56000†	Shock	—	—	S4	S4	10.75"	17.25"	6.5"	—	P01134,P01137
56001†	Shock	—	—	XP7	SP	9.5"	14.25"	4.75"	—	P00423
56002	Shock	—	—	S4	LS12	9.88"	15.75"	5.88"	—	P01134
56003†	Shock	—	—	S4	LS20	8.38"	11"	2.63"	—	P01135
58241†	Shock	—	—	L1/CP3	LS36	9.75"	14.38"	4.63"	45	P00019
58263†	Shock	—	—	S4	XP4	9.13"	13.75"	4.63"	45	P01134
58270†	Shock	—	—	S4	XP4	8.75"	13"	4.25"	45	P01134
58273†	Shock	—	—	S4	XP4	8.75"	13"	4.25"	45	P01134
58275†	Shock	—	—	S4	LS38	9.25"	14"	4.75"	45	P01135
58411†	Shock	—	—	XP7	L1/CP3	12.5"	20"	7.5"	28	P00576
58427	Shock	—	—	S4	LS7	14.25"	21.5"	7.25"	25	P01278
58484	Shock	—	—	L2	L2	14.13"	23.13"	9"	60	None
58496	Shock	—	—	L2	L2	13"	21.25"	8.25"	V/R	P00076
58510	Shock	—	—	S4	L1/CP3	12.75"	21.38"	8.63"	V/R	P00577,P01134
58518	Shock	—	—	S4	LS38	12.13"	19.63"	7.5"	60	P01134
58523†	Shock	—	—	XP7	LS47	14.5"	22.75"	8.25"	V/R	None
58527	Shock	—	—	LS37	LS37	11.63"	19"	7.38"	60	None
58539	Shock	—	—	S4	S4	10.63"	17.88"	7.25"	V/R	P01134
58551	Shock	—	—	XP7	S4	12.13"	20.38"	8.25"	V/R	P01137
58552	Shock	—	—	LS41	LS37	11.13"	18"	6.88"	V/R	None
58567	Shock	—	—	L1	L1	12.5"	20.38"	7.88"	60	P00573
58568†	Shock	—	—	S4	L1/CP3	12.38"	19.88"	7.5"	V/R	P01136,P00576
58571†	Shock	—	—	LS39	L2	15.5"	25"	9.5"	60	None
58574†	Shock	—	—	XP7	L1/CP3	13.38"	21.25"	7.88"	V/R	P00576,P00941
58575	Shock	—	—	LS37	LS37	9.38"	14.5"	5.13"	60	None
58577	Shock	—	—	LS39	L2	13.75"	22.5"	8.75"	V/R	None
58578	Shock	—	—	L1/CP5	LS47	14"	22.88"	8.88"	60	P00019
58591	Shock	—	—	L1	LS26	14.88"	24.75"	9.88"	60	None
58594†	Shock	—	—	XP12	L1	12.75"	20"	7.25"	V/R	None
58595	Shock	—	—	LS39	LS39	13"	20.88"	7.88"	60	P00185
58598†	Shock	—	—	LS74	LS74	14.63"	22.13"	7.5"	V/R	None

† Bumper Stop Unit. Dimension Shown at Bumper Contact

‡ Hydraulic Lockout Unit. Dimension Shown is Metal-to-Metal, Subtract Approximately 5/8" (.62) from the Extended Length for Start-of-Engagement.

MOUNTING & LENGTH SPECIFICATIONS

Part No.	Part Type	STRUT BODY		END CODE		LENGTHS			Spring (Rate)	Parts Pack(s)
		Type	Length	Upper	Lower	Comp.	Ext.	Trav.		
58600†	Shock	—	—	XP7	LS47	16.13"	26.75"	10.63"	60	None
58601	Shock	—	—	L1	LS26	14.25"	23"	8.75"	60	None
58604	Shock	—	—	L1	LS26	15.75"	26.38"	10.63"	60	None
58605†	Shock	—	—	S4	LS26	12.38"	19.75"	7.38"	60	P01135
58606†	Shock	—	—	XP7	LS47	14"	22.38"	8.38"	60	None
58608	Shock	—	—	L1	LS26	14.25"	23"	8.75"	V/R	P00827
58610	Shock	—	—	LS47	LS47	15.25"	24.63"	9.38"	60	None
58612†	Shock	—	—	XP7	LS47	14.63"	23.75"	9.13"	60	None
58615	Shock	—	—	LS47	LS47	15.25"	24.63"	9.38"	60	None
58617†	Shock	—	—	XP7	LS26	15.5"	25.13"	9.63"	37	P00941
58618	Shock	—	—	L1	LS26	15.75"	26.13"	10.38"	37	P00827
58620†	Shock	—	—	LS28	LS28	11.25"	17"	5.75"	45	None
58624†	Shock	—	—	LS27	LS26	10.63"	15.75"	5.13"	45	None
58625	Shock	—	—	S4	LS26	13.38"	22.13"	8.75"	60	P01135
58628	Shock	—	—	S4	LS26	14.25"	23.88"	9.63"	60	P01135
58629†	Shock	—	—	S5	LS26	16"	26.38"	10.38"	37	P01167
58630†	Shock	—	—	LS28	LS28	14.5"	22.75"	8.25"	37	None
58633†	Shock	—	—	LS26	LS26	14.25"	23"	8.75"	60	None
58636†	Shock	—	—	LS47	LS47	15.5"	23.88"	8.38"	60	None
58637†	Shock	—	—	LS47	LS47	16.88"	25.75"	8.88"	60	None
58638	Shock	—	—	LS47	LS47	16"	25.88"	9.88"	60	None
58639	Shock	—	—	LS47	LS47	15"	23.63"	8.63"	60	None
58640	Shock	—	—	LS47	LS47	15.75"	26.5"	10.75"	60	None
58642	Shock	—	—	LS38	LS38	15.34"	25.17"	9.83"	60	None
58643	Shock	—	—	LS38	LS38	16.59"	27.55"	10.96"	60	None
58644	Shock	—	—	LS40	LS41	14.73"	23.82"	9.09"	60	None
58645	Shock	—	—	LS38	LS38	11.36"	17.32"	5.96"	45	None
58646	Shock	—	—	LS30	LS38	15.16"	24.87"	9.71"	37	None
58647	Shock	—	—	LS29	LS25	13.74"	22.45"	8.71"	60	None
58648	Shock	—	—	LS28	LS28	10.49"	15.57"	5.08"	45	None
58649	Shock	—	—	LS28	LS28	15.24"	25.2"	9.96"	37	None
58650	Shock	—	—	LS74	LS74	14.73"	24.07"	9.34"	37	None
58651	Shock	—	—	LS30	LS28	15.3"	24.38"	9.08"	V/R	None
58653†	Shock	—	—	LS27	LS27	18.94"	28.14"	9.2"	60	None
58654	Shock	—	—	LS43	LS43	15.54"	24.83"	9.29"	—	None
58655†	Shock	—	—	L4	L4	12.9"	20.05"	7.14"	—	None
58656	Shock	—	—	LS75	LS91	15.93"	25.94"	10.01"	—	None
58657†	Shock	—	—	LS27	LS27	14.52"	20.18"	5.44"	—	—
58658†	Shock	—	—	LS70	LS70	13.64"	18.34"	4.48"	—	—
59001	Shock	—	—	L1	L1	12"	19.5"	7.5"	—	P00411
59002	Shock	—	—	S4	L1	9.63"	15.38"	5.75"	—	P01134
59003	Shock	—	—	L1	L1	13.38"	23.13"	9.75"	—	P00829
59004	Shock	—	—	L2	L2	14.13"	23.38"	9.25"	—	None
59005	Shock	—	—	L1	S4	11.88"	19.38"	7.5"	—	P01137
59006†	Shock	—	—	S4	LS25	10.62"	16.48"	5.86"	—	P01135
59007	Shock	—	—	S4	LS26	12.38"	19.75"	7.38"	—	P01134
59008	Shock	—	—	S4	LS23	8.88"	13.75"	4.88"	—	P01134
59009	Shock	—	—	S4	XP7	8.63"	13.25"	4.63"	—	P01135
59011	Shock	—	—	L1	LS26	12.84"	20.38"	7.54"	—	P57
59012	Shock	—	—	XP7	LS92	14.5"	24"	9.5"	—	None
59013†	Shock	—	—	LS39	LS39	11.5"	16.5"	5"	—	None
59014†	Shock	—	—	S4	XP7	12.5"	19.88"	7.38"	—	P01136
59015	Shock	—	—	XP7	L1	12.38"	20.38"	8"	—	None
59016	Shock	—	—	S4	LS23	8.38"	12.5"	4.13"	—	P01137
59017	Shock	—	—	L1	L1	11.25"	17.88"	6.63"	—	P00411
59018	Shock	—	—	LS39	L2	15.63"	26.25"	10.63"	—	None
59021†	Shock	—	—	L1	LS26	11.75"	18"	6.25"	—	None
59022	Shock	—	—	LS74	LS74	13.88"	22.88"	9"	—	None
59023	Shock	—	—	S4	XP7	8.63"	13"	4.38"	—	P01135
59024	Shock	—	—	XP7	LS28	13.75"	22.75"	9"	—	None
59025	Shock	—	—	S4	LS23	9.25"	14.38"	5.13"	—	P01134

† Bumper Stop Unit. Dimension Shown at Bumper Contact

‡ Hydraulic Lockout Unit. Dimension Shown is Metal-to-Metal, Subtract Approximately 5/8" (.62) from the Extended Length for Start-of-Engagement.

MOUNTING & LENGTH SPECIFICATIONS

Part No.	Part Type	STRUT BODY		END CODE		LENGTHS			Spring (Rate)	Parts Pack(s)
		Type	Length	Upper	Lower	Comp.	Ext.	Trav.		
59026†	Shock	—	—	S4	LS38	14.4"	23.87"	9.47"	—	P01135
59027	Shock	—	—	L1	LS26	11.63"	18.25"	6.63"	—	None
59028	Shock	—	—	S4	XP7	9.5"	14"	4.5"	—	P1134
59029†	Shock	—	—	XP7	LS92	16.34"	26.75"	10.41"	—	None
59030†	Shock	—	—	S4	LS26	10.5"	15.88"	5.38"	—	P01135
59031†	Shock	—	—	S4	LS26	9.63"	14.75"	5.13"	—	P01135
59032	Shock	—	—	L1	LS26	12.88"	21.38"	8.5"	—	P570
59033†	Shock	—	—	LS28	LS26	11.88"	18.13"	6.25"	—	None
59034	Shock	—	—	L1	LS26	13.38"	22.88"	9.5"	—	None
59036†	Shock	—	—	S4	L1	9.25"	14"	4.75"	—	P01135
59037	Shock	—	—	L1	LS26	13.88"	22.88"	9"	—	P00827
59038	Shock	—	—	L1	LS26	15.34"	26.41"	11.07"	—	P00827
59039	Shock	—	—	L1	LS26	14.97"	24.63"	9.66"	—	None
59040†	Shock	—	—	S4	LS26	9.25"	14"	4.75"	—	P01135
59041	Shock	—	—	L1	LS26	10.13"	14.63"	4.5"	—	P00019
59042	Shock	—	—	LS24	LS24	11.88"	18.25"	6.38"	—	P00816
59043	Shock	—	—	LS37	LS37	9.93"	14.63"	4.7"	—	None
59044	Shock	—	—	LS24	LS24	14.13"	22.88"	8.75"	—	P00019
59045	Shock	—	—	LS29	LS29	12.88"	21"	8.13"	—	None
59047	Shock	—	—	S4	LS26	13.88"	23.75"	9.88"	—	P01135
59048†	Shock	—	—	S4	LS39	10.04"	14.26"	4.22"	—	P1136
59049	Shock	—	—	S4	LS26	15.63"	27.25"	11.63"	—	P1136
59061†	Shock	—	—	S4	XP7	10.38"	14.38"	4"	—	P01135
59062†	Shock	—	—	LS92	LS92	15.55"	23.81"	8.26"	—	None
59086	Shock	—	—	S4	XP7	9.25"	14.5"	5.25"	—	P01134
59087	Shock	—	—	S4	SPEC	8.68"	13.37"	4.69"	—	P01134
59088	Shock	—	—	XP7	LS26	15"	25.25"	10.25"	—	P00941
59089	Shock	—	—	S4	XP7	8.63"	13.38"	4.75"	—	P01134
59090†	Shock	—	—	LS77	LS28	11.34"	16.44"	5.1"	—	None
59091†	Shock	—	—	L3	L3	13.63"	21.63"	8"	—	P00575
59092	Shock	—	—	S4	LS50	8.75"	13.5"	4.75"	—	P01134
59301	Shock	—	—	S4	SPEC	8.68"	13.37"	4.69"	—	P01134
59302†	Shock	—	—	LS39	LS39	11.5"	16.5"	5"	—	None
59303	Shock	—	—	XP7	LS92	14.5"	24"	9.5"	—	None
59304†	Shock	—	—	L1	L1	12.97"	20.93"	7.96"	—	None
59305	Shock	—	—	S4	XP7	9.25"	14.5"	5.25"	—	P01134
59306	Shock	—	—	L1	L1	13.38"	23.13"	9.75"	—	P00829
59307	Shock	—	—	S4	LS23	9.25"	14.38"	5.13"	—	P01134
59308†	Shock	—	—	S4	LS26	9.25"	14"	4.75"	—	P01135
59309†	Shock	—	—	S4	L1	9.25"	14"	4.75"	—	P01135
59311†	Shock	—	—	S4	L1	10.04"	15.5"	5.46"	—	P1135
59312	Shock	—	—	L1	LS26	13.88"	22.88"	9"	—	P00827
59313	Shock	—	—	L1	LS26	15.34"	26.41"	11.07"	—	P00827
59314†	Shock	—	—	S4	LS27	9.13"	13.75"	4.63"	—	P1134
59316	Shock	—	—	S4	LS23	8.38"	12.5"	4.13"	—	P01137
59317	Shock	—	—	L1	S4	11.88"	19.38"	7.5"	—	P01137
59318	Shock	—	—	S4	LS50	8.75"	13.5"	4.75"	—	P01134
59319	Shock	—	—	S4	LS23	10.25"	16.38"	6.13"	—	P1134
59320†	Shock	—	—	L3	L3	13.63"	21.63"	8"	—	P00575
59321	Shock	—	—	S4	LS23	8.88"	13.75"	4.88"	—	P01134
59322†	Shock	—	—	S4	XP7	12.5"	19.88"	7.38"	—	P01136
59323	Shock	—	—	XP7	L1	12.38"	20.38"	8"	—	None
59324	Shock	—	—	S4	L1/CP1	12.63"	21.25"	8.63"	—	P00576,P01134
59325†	Shock	—	—	S4	L3	12.88"	20.88"	8"	—	P01134,P00081
59326	Shock	—	—	S4	LS23	9.38"	14.63"	5.25"	—	P01134
59327	Shock	—	—	S4	XP7	8.63"	13"	4.38"	—	P01135
59328	Shock	—	—	XP7	LS28	13.75"	22.75"	9"	—	None
59329	Shock	—	—	S4	LS38	9.63"	14.88"	5.25"	—	P01135
59330	Shock	—	—	XP7	LS28	15.5"	25.88"	10.38"	—	None
59331†	Shock	—	—	S4	XP7	13"	21.13"	8.13"	—	P01136
59332	Shock	—	—	XP7	LS26	15"	25.25"	10.25"	—	P00941

† Bumper Stop Unit. Dimension Shown at Bumper Contact

‡ Hydraulic Lockout Unit. Dimension Shown is Metal-to-Metal, Subtract Approximately 5/8" (.62) from the Extended Length for Start-of-Engagement.

MOUNTING & LENGTH SPECIFICATIONS

Part No.	Part Type	STRUT BODY		END CODE		LENGTHS			Spring (Rate)	Parts Pack(s)
		Type	Length	Upper	Lower	Comp.	Ext.	Trav.		
59333†	Shock	—	—	S4	LS26	11.5"	18.25"	6.75"	—	P01134
59336†	Shock	—	—	LS28	LS28	11.75"	18"	6.25"	—	None
59337†	Shock	—	—	LS77	LS28	11"	16.38"	5.38"	—	None
59338	Shock	—	—	LS74	LS74	13.88"	22.88"	9"	—	None
59339†	Shock	—	—	S4	XP7	9.75"	15.13"	5.38"	—	P1135
59340	Shock	—	—	S4	SPEC	8.68"	13.37"	4.69"	—	P01134
59341†	Shock	—	—	L1	LS26	11.75"	18"	6.25"	—	None
59342†	Shock	—	—	S4	LS7	16"	20.75"	4.75"	—	P01278
59343†	Shock	—	—	LS30	L1	9.88"	14.75"	4.88"	—	None
59347	Shock	—	—	S4	S4	12.25"	20.75"	8.5"	—	P01137
59348	Shock	—	—	S4	XP7	8.63"	13.38"	4.75"	—	P01134
59349†	Shock	—	—	L1	L1	12.97"	20.93"	7.96"	—	None
59350†	Shock	—	—	L3	LS43	13.38"	21.25"	7.88"	—	P867
59352†	Shock	—	—	S4	LS38	14.4"	23.87"	9.47"	—	P01135
59353	Shock	—	—	L1	LS26	11.63"	18.25"	6.63"	—	None
59356†	Shock	—	—	L1	LS25	13.38"	21.5"	8.13"	—	None
59357	Shock	—	—	L1	LS50	12"	19.63"	7.63"	—	None
59358	Shock	—	—	L1	L1	15.13"	25"	9.88"	—	None
59359†	Shock	—	—	LS28	LS28	11.25"	17.13"	5.88"	—	None
59360	Shock	—	—	S4	LS23	10.25"	15.38"	5.13"	—	P01134
59361†	Shock	—	—	LS78	L3	12.63"	19.75"	7.13"	—	P00120
59362	Shock	—	—	S4	LS24	9.13"	13.63"	4.5"	—	P01134
59363†	Shock	—	—	S4	LS50	11.75"	18.13"	6.38"	—	P01134
59364†	Shock	—	—	LS27	LS26	10.5"	15.75"	5.25"	—	None
59366	Shock	—	—	S4	XP7	9.38"	14.5"	5.13"	—	P01134
59367†	Shock	—	—	L1	L1	11.97"	19.66"	7.69"	—	None
59368†	Shock	—	—	L3	L3	12.88"	20.38"	7.5"	—	P00575
59369†	Shock	—	—	L3	L3	12.5"	19.63"	7.13"	—	P00575
59370†	Shock	—	—	S4	LS22	13"	21.5"	8.5"	—	P01134
59371†	Shock	—	—	S4	XP7	13.5"	17.88"	4.38"	—	P01135,P00941
59372	Shock	—	—	S4	XP7	8.38"	12.75"	4.38"	—	P01134
59373†	Shock	—	—	LS28	LS26	11.88"	18.13"	6.25"	—	None
59374†	Shock	—	—	XP7	LS24	12.5"	19.63"	7.13"	—	None
59375	Shock	—	—	S4	XP7	8.5"	13"	4.5"	—	P01135
59376†	Shock	—	—	LS28	LS28	14.47"	22.81"	8.34"	—	None
59378†	Shock	—	—	LS28	LS28	15.25"	24.63"	9.38"	—	None
59379†	Shock	—	—	S4	XP7	10.38"	13.63"	3.25"	—	P01135
59381†	Shock	—	—	LS26	LS26	12.5"	20.13"	7.63"	—	None
59382†	Shock	—	—	S4	L3	12.38"	20"	7.63"	—	P01134,P00081
59383†	Shock	—	—	LS52	LS30	14.38"	23.13"	8.75"	—	None
59385†	Shock	—	—	S4	LS78	11.63"	18.63"	7"	—	P01134
59386†	Shock	—	—	S4	XP7	13"	21.13"	8.13"	—	P01136,P00941
59387†	Shock	—	—	LS29	LS25	13.38"	21.75"	8.38"	—	None
59394	Shock	—	—	S4	LS23	8.75"	13.38"	4.63"	—	P01134
59395†	Shock	—	—	L1	LS50	13.38"	20.75"	7.38"	—	None
59398	Shock	—	—	SPEC	LS23	11.07"	16.38"	5.31"	—	None
59399	Shock	—	—	LS30	LS28	15.25"	24.32"	9.07"	—	None
59400	Shock	—	—	LS30	LS39	15.19"	24.88"	9.69"	—	None
59401	Shock	—	—	LS27	LS27	11.47"	17.41"	5.94"	—	None
59402	Shock	—	—	S4	L1	13.03"	21.85"	8.82"	—	P01137
59404†	Shock	—	—	S4	XP7	11.5"	17.88"	6.38"	—	P01135,P00941
59407	Shock	—	—	S4	LS21	10"	14.5"	4.5"	—	P01134
59408†	Shock	—	—	XP5	LS92	14.31"	22.96"	8.65"	—	None
59409†	Shock	—	—	S4	LS23	8"	11.91"	3.88"	—	P01137
59410	Shock	—	—	L1	L1	14"	22.5"	8.5"	—	None
59411	Shock	—	—	S4	LS23	8.25"	11.69"	3.44"	—	P01137
59412†	Shock	—	—	LS40	LS77	14.45"	23.1"	8.65"	—	None
59413†	Shock	—	—	S4	LS82	15.21"	25.1"	9.89"	—	P01137
59414†	Shock	—	—	LS28	LS28	10.4"	14.91"	4.51"	—	None
59415†	Shock	—	—	LS30	LS28	13.82"	21.84"	8.02"	—	None
59416†	Shock	—	—	LS38	LS38	11.26"	16.78"	5.52"	—	None

† Bumper Stop Unit. Dimension Shown at Bumper Contact

‡ Hydraulic Lockout Unit. Dimension Shown is Metal-to-Metal, Subtract Approximately 5/8" (.62) from the Extended Length for Start-of-Engagement.

MOUNTING & LENGTH SPECIFICATIONS

Part No.	Part Type	STRUT BODY		END CODE		LENGTHS			Spring (Rate)	Parts Pack(s)
		Type	Length	Upper	Lower	Comp.	Ext.	Trav.		
59417†	Shock	—	—	SPEC	LS44	10.28"	15.96"	5.68"	—	None
59418†	Shock	—	—	XP16	LS38	14.01"	22.53"	8.52"	—	None
59501†	Shock	—	—	S5	XP5	10.25"	14.88"	4.63"	—	P01167
59502	Shock	—	—	S4	LS26	14.38"	24.25"	9.88"	—	P01135
59503‡	Shock	—	—	S4	LS39	10"	14.25"	4.25"	—	P01136
59504	Shock	—	—	S4	LS26	16"	27.5"	11.5"	—	P01136
59505†	Shock	—	—	S4	LS26	10"	14.63"	4.63"	—	P01135
59506	Shock	—	—	S4	LS26	10.5"	15.88"	5.38"	—	P01135
59507	Shock	—	—	L1	LS26	12.75"	20.5"	7.75"	—	None
59508†	Shock	—	—	LS26	LS26	14"	22.5"	8.5"	—	None
59509	Shock	—	—	LS26	L1	16.38"	27.25"	10.88"	—	None
59510	Shock	—	—	L1/CP1	LS36	10.38"	16"	5.63"	—	P00019
59511†	Shock	—	—	S4	XP5	9.63"	14"	4.38"	—	P01134
59512	Shock	—	—	S4	XP8	8.88"	13.38"	4.5"	—	P01135
59513†	Shock	—	—	LS48	LS54	14.5"	22.75"	8.25"	—	None
59514†	Shock	—	—	XP5	LS47	14"	22.75"	8.75"	—	None
59515†	Shock	—	—	S4	LS26	12.5"	19.88"	7.38"	—	P01135
59516†	Shock	—	—	S4	L1	9.88"	14.63"	4.75"	—	P01135
59517	Shock	—	—	S4	LS26	13.13"	21.75"	8.63"	—	P01135
59518†	Shock	—	—	XP7	LS47	13.88"	22.5"	8.63"	—	None
59519†	Shock	—	—	XP7	LS47	14.63"	23.88"	9.25"	—	None
59520†	Shock	—	—	XP7	LS47	15.25"	25.25"	10"	—	None
59522	Shock	—	—	LS39	L2	16.63"	28.5"	11.88"	—	None
59523†	Shock	—	—	S5	LS47	9.5"	13.75"	4.25"	—	P01167
59524	Shock	—	—	LS47	LS47	15.38"	24.63"	9.25"	—	None
59525‡	Shock	—	—	S5	LS47	13.88"	21.75"	7.88"	—	P01167
59527	Shock	—	—	LS47	LS47	15.75"	26.13"	10.38"	—	None
59528‡	Shock	—	—	S5	LS47	14.38"	22.75"	8.38"	—	P01167
59529†	Shock	—	—	LS39	LS40	15.13"	24.63"	9.5"	—	None
59531†	Shock	—	—	S5	S5	14.25"	23.25"	9"	—	P01167
59532†	Shock	—	—	S4	L3	14.38"	23.25"	8.88"	—	P00120,P01167
59533	Shock	—	—	L1	L1	16.13"	27.25"	11.13"	—	None
59534†	Shock	—	—	S4	LS26	10.13"	15"	4.88"	—	P01135
59535	Shock	—	—	S4	XP8	9.25"	13.63"	4.38"	—	P01135
59536†	Shock	—	—	S4	L1	9.38"	14.25"	4.88"	—	P01135
59537†	Shock	—	—	L1	LS26	14"	22.25"	8.25"	—	None
59539‡	Shock	—	—	LS77	LS39	11.75"	15.88"	4.13"	—	None
59541	Shock	—	—	L1	L1	13.25"	21"	7.75"	—	P00573
59542	Shock	—	—	L1/CP1	LS36	9.88"	14.63"	4.75"	—	P00019
59544	Shock	—	—	L1/CP1	LS47	14"	22.88"	8.88"	—	P00019
59547	Shock	—	—	S4	XP8	8.88"	13.38"	4.5"	—	P01135
59548	Shock	—	—	LS39	L2	14.75"	24.38"	9.63"	—	None
59549	Shock	—	—	LS24	LS24	9.93"	14.63"	4.7"	—	None
59550	Shock	—	—	L2	L2	13.25"	21.13"	7.88"	—	None
59551	Shock	—	—	LS39	L2	15.63"	26.25"	10.63"	—	None
59552	Shock	—	—	S4	XP8	10"	15.5"	5.5"	—	P01135
59553	Shock	—	—	S4	LS38	9.88"	14.38"	4.5"	—	P01135
59554	Shock	—	—	S4	LS38	10.63"	15.88"	5.25"	—	P01135
59555	Shock	—	—	S4	LS38	13.75"	22.63"	8.88"	—	P01135
59556	Shock	—	—	L1	L1	11.88"	18.13"	6.25"	—	P00411
59557	Shock	—	—	L1	L1	12.63"	19.75"	7.13"	—	None
59558†	Shock	—	—	S4	LS38	10.13"	16.75"	6.63"	—	P01135
59559†	Shock	—	—	S4	LS38	13.38"	21.25"	7.88"	—	P01135
59560†	Shock	—	—	S4	S4	13.25"	22"	8.75"	—	P01134
59561	Shock	—	—	LS39	LS39	13"	20.88"	7.88"	—	None
59562	Shock	—	—	S4	LS38	12.38"	19.75"	7.38"	—	P01136
59564	Shock	—	—	LS37	LS39	11.63"	18.25"	6.63"	—	P00816
59565	Shock	—	—	LS47	LS47	15.5"	26.13"	10.63"	—	None
59566	Shock	—	—	S4	L1	11.5"	18.38"	6.88"	—	P01135
59567	Shock	—	—	L1	LS26	13.5"	21.75"	8.25"	—	None
59568	Shock	—	—	S4	LS26	11.63"	18.5"	6.88"	—	P01135,P00864

† Bumper Stop Unit. Dimension Shown at Bumper Contact

‡ Hydraulic Lockout Unit. Dimension Shown is Metal-to-Metal, Subtract Approximately 5/8" (.62) from the Extended Length for Start-of-Engagement.

MOUNTING & LENGTH SPECIFICATIONS

Part No.	Part Type	STRUT BODY		END CODE		LENGTHS			Spring (Rate)	Parts Pack(s)
		Type	Length	Upper	Lower	Comp.	Ext.	Trav.		
59569	Shock	—	—	LS40	LS40	14.75"	24.63"	9.88"	—	None
59570	Shock	—	—	L1	LS26	14.88"	24.75"	9.88"	—	None
59571	Shock	—	—	LS37	LS37	11.75"	18.38"	6.63"	—	P00816
59574	Shock	—	—	L1	LS38	12.63"	20.38"	7.75"	—	P00826
59576	Shock	—	—	LS47	LS47	14.13"	22.88"	8.75"	—	None
59577	Shock	—	—	L1	LS26	14.13"	22.88"	8.75"	—	None
59578	Shock	—	—	L1	LS26	15.75"	26.38"	10.63"	—	None
59581†	Shock	—	—	S4	XP5	9.5"	13.75"	4.25"	—	P01134
59582‡	Shock	—	—	LS77	LS39	11.38"	16.5"	5.13"	—	None
59583	Shock	—	—	XP7	LS47	16.13"	26.75"	10.63"	—	None
59585†	Shock	—	—	LS26	LS26	13.63"	21.63"	8"	—	None
59586†	Shock	—	—	LS26	LS26	14.25"	23"	8.75"	—	None
59587	Shock	—	—	S4	LS43	14.25"	23.88"	9.63"	—	P01135
59588	Shock	—	—	S4	LS43	16.13"	27.38"	11.25"	—	P01136
59589	Shock	—	—	S4	XP5	10.38"	14.38"	4"	—	P01135
59590†	Shock	—	—	LS47	LS47	15.5"	23.75"	8.25"	—	None
59591†	Shock	—	—	S4	SPEC	11"	15.13"	4.13"	—	P01136
59592†	Shock	—	—	LS47	LS47	16.75"	25.5"	8.75"	—	None
59595†	Shock	—	—	LS26	LS26	14"	20.13"	6.13"	—	None
59596†	Shock	—	—	S5	L1	10.13"	15"	4.88"	—	P01167
59597	Shock	—	—	L1	LS26	16.5"	28.25"	11.75"	—	None
59598†	Shock	—	—	L1	LS26	14.25"	22.88"	8.63"	—	None
59599	Shock	—	—	L1	LS26	18"	31"	13"	—	None
59600†	Shock	—	—	S5	XP5	10.25"	15"	4.75"	—	P01167
59601†	Shock	—	—	LS47	LS47	16"	26"	10"	—	None
59603†	Shock	—	—	LS47	LS47	14.75"	23.5"	8.75"	—	None
59605†	Shock	—	—	LS47	LS47	15"	24.13"	9.13"	—	None
59611†	Shock	—	—	S4	SPEC	10.88"	15.25"	4.38"	—	P01135
59614†	Shock	—	—	S5	LS42	10.38"	15.13"	4.75"	—	P01167
59624†	Shock	—	—	S5	XP10	9.88"	14.25"	4.38"	—	P01167
59625	Shock	—	—	LS47	LS47	16"	26.5"	10.5"	—	None
59626†	Shock	—	—	S5	LS47	10.75"	15.88"	5.13"	—	P01167
59627	Shock	—	—	XP7	LS26	15.25"	25.13"	9.88"	—	None
59628†	Shock	—	—	L1	LS26	13.75"	21.88"	8.13"	—	None
59629	Shock	—	—	XP7	LS26	16.75"	28.25"	11.5"	—	None
59630†	Shock	—	—	S5	XP12	11"	16.38"	5.38"	—	P01167
59631	Shock	—	—	LS47	LS47	16.5"	27.5"	11"	—	None
59632†	Shock	—	—	S5	LS47	14.5"	22.75"	8.25"	—	P01167
59633	Shock	—	—	S5	LS47	13.63"	20.75"	7.13"	—	P01167
59634	Shock	—	—	LS49	LS26	14.75"	24.75"	10"	—	None
65101	Shock	—	—	L3	L3	12.69"	19.67"	6.98"	—	None
65102	Shock	—	—	L4	L4	16.63"	27"	10.38"	—	None
65103	Shock	—	—	L4	L4	16.38"	26.38"	10"	—	None
65104	Shock	—	—	L4	L4	14"	21.88"	7.88"	—	None
65105	Shock	—	—	LS53	S6	14"	22.88"	8.88"	—	P01482
65106	Shock	—	—	LS54	LS54	13.5"	21.38"	7.88"	—	None
65107	Shock	—	—	S6	LS54	12.88"	20.75"	7.88"	—	P01482
65108	Shock	—	—	LS54	LS54	14.5"	23.38"	8.88"	—	None
65109	Shock	—	—	LS54	LS54	14"	22.5"	8.5"	—	None
65110	Shock	—	—	LS54	LS54	15.25"	24.88"	9.63"	—	None
65111	Shock	—	—	L3	L3	17"	28.38"	11.38"	—	None
65112	Shock	—	—	L3	L3	15.13"	24.75"	9.63"	—	None
65113	Shock	—	—	L3	L3	13.31"	20.94"	7.63"	—	None
65114	Shock	—	—	L3	L3	16.13"	26.63"	10.5"	—	None
65115	Shock	—	—	S6	S6	13.13"	21.63"	8.5"	—	P01482
65116	Shock	—	—	L4	L4	15.38"	24.25"	8.88"	—	None
65118	Shock	—	—	L4	L4	16.5"	26.37"	9.87"	—	None
65119	Shock	—	—	LS54	LS54	13.06"	20.45"	7.39"	—	None
65120	Shock	—	—	LS54	LS54	16.1"	26.51"	10.41"	—	None
65121	Shock	—	—	LS54	LS54	14"	22.5"	8.5"	—	None
65122	Shock	—	—	L3	L3	18.75"	32"	13.25"	—	None

† Bumper Stop Unit. Dimension Shown at Bumper Contact

‡ Hydraulic Lockout Unit. Dimension Shown is Metal-to-Metal, Subtract Approximately 5/8" (.62) from the Extended Length for Start-of-Engagement.

MOUNTING & LENGTH SPECIFICATIONS

Part No.	Part Type	STRUT BODY		END CODE		LENGTHS			Spring (Rate)	Parts Pack(s)
		Type	Length	Upper	Lower	Comp.	Ext.	Trav.		
65123	Shock	—	—	LS54	LS54	14.88"	24.25"	9.38"	—	None
65124	Shock	—	—	LS54	LS54	15.5"	24.5"	9"	—	None
65128	Shock	—	—	LS62	L3	16.13"	25.5"	9.38"	—	None
65138	Shock	—	—	LS59	LS60	17.25"	28.25"	11"	—	None
65139	Shock	—	—	LS86	LS86	14.5"	22.75"	8.25"	—	None
65140	Shock	—	—	LS86	LS86	14.38"	22.5"	8.13"	—	None
65141	Shock	—	—	LS54	LS54	13.5"	21.38"	7.88"	—	None
65142	Shock	—	—	LS26	LS26	17"	28.13"	11.13"	—	None
65143	Shock	—	—	LS53	LS53	13.22"	20.28"	7.06"	—	None
65144	Shock	—	—	LS53	LS53	13.22"	20.28"	7.06"	—	None
65145	Shock	—	—	LS53	LS53	13.22"	20.28"	7.06"	—	None
65146	Shock	—	—	LS53	LS53	16.44"	23.36"	6.92"	—	None
65147	Shock	—	—	LS53	LS54	13"	20.25"	7.25"	—	None
65148	Shock	—	—	LS86	LS86	14.63"	22.75"	8.13"	—	None
65153	Shock	—	—	S6	LS54	13.5"	21.5"	8"	—	P01482
65155	Shock	—	—	LS53	LS53	13.25"	20.31"	7.06"	—	None
65156	Shock	—	—	LS71	LS54	15.53"	25.34"	9.81"	—	None
65157	Shock	—	—	LS53	LS54	13.19"	20.73"	7.54"	—	None
65158	Shock	—	—	LS53	LS54	13.19"	20.73"	7.54"	—	None
65159	Shock	—	—	LS87	L4	15.88"	25.88"	10"	—	None
65160	Shock	—	—	LS53	S6	13.88"	22.56"	8.69"	—	P01482
65161	Shock	—	—	S6	S6	16.94"	29.25"	12.31"	—	P01482
65162	Shock	—	—	LS86	LS86	13.66"	21.41"	7.75"	—	None
65164	Shock	—	—	S5	LS43	14.75"	22.97"	8.22"	—	P01167
65165	Shock	—	—	LS47	LS47	15"	23.13"	8.13"	—	None
65166	Shock	—	—	LS68	LS54	15.56"	25.2"	9.64"	—	None
65167	Shock	—	—	S5	LS47	13.38"	20.88"	7.5"	—	P01167
65168	Shock	—	—	L1	LS26	15.06"	24.31"	9.25"	—	None
65169	Shock	—	—	S6	S6	13.99"	23.38"	9.39"	—	P01482
65171	Shock	—	—	LS53	LS54	19.13"	25.75"	6.63"	—	None
65172	Shock	—	—	LS47	LS47	13.5"	21.5"	8"	—	None
65173	Shock	—	—	S6	S6	11.13"	17.75"	6.63"	—	P01482
65174†	Shock	—	—	L1	LS26	17.06"	28.44"	11.38"	—	None
65175	Shock	—	—	LS87	LS80	13.19"	20.63"	7.44"	—	None
65176	Shock	—	—	LS87	LS80	13.16"	20.63"	7.47"	—	None
65178	Shock	—	—	LS53	LS53	14.52"	22.79"	8.27"	—	None
65179	Shock	—	—	LS53	LS54	14.63"	23.61"	8.97"	—	None
65180	Shock	—	—	LS53	LS54	16.65"	27.15"	10.47"	—	None
65181†	Shock	—	—	LS80	LS80	15.63"	24.01"	8.38"	—	None
65183	Shock	—	—	LS70	LS70	17.14"	26.45"	9.31"	—	None
65184	Shock	—	—	LS70	LS54	13.8"	21.07"	7.27"	—	None
65185	Shock	—	—	LS70	LS54	14.52"	22.67"	8.15"	—	None
65400‡	Shock	—	—	S6	L4	17.38"	26.75"	9.38"	—	P01482
65401‡	Shock	—	—	LS54	LS54	17.88"	29.56"	11.69"	—	None
65402‡	Shock	—	—	S6	L4	15.06"	24.06"	9"	—	P01482
65403	Shock	—	—	LS54	LS54	16.54"	26.8"	10.26"	—	None
65404‡	Shock	—	—	S6	S6	12.01"	18.79"	6.78"	—	P01482
65405‡	Shock	—	—	L3	L3	13.13"	20.07"	6.02"	—	P01009
65406‡	Shock	—	—	L3	L3	17.38"	28"	10.63"	—	P01009
65407‡	Shock	—	—	L4	L4	15.45"	24.16"	8.7"	—	None
65408‡	Shock	—	—	S6	LS71	14.13"	21.75"	7.63"	—	P01482
65409‡	Shock	—	—	LS53	LS53	15.75"	24.75"	9"	—	None
65410‡	Shock	—	—	L4	L4	12.26"	17.82"	5.56"	—	None
65411‡	Shock	—	—	LS54	LS54	16.38"	26.5"	10.13"	—	None
65412‡	Shock	—	—	LS54	LS54	15.75"	25.22"	9.47"	—	None
65413‡	Shock	—	—	S6	S6	14.63"	23.38"	8.75"	—	P01482
65414‡	Shock	—	—	S6	S6	14.63"	23.38"	8.75"	—	P01482
65415‡	Shock	—	—	L3	L3	16.88"	26.75"	9.88"	—	None
65416‡	Shock	—	—	LS54	LS54	11.99"	17.75"	5.76"	—	None
65417‡	Shock	—	—	LS65	LS65	11.63"	14.75"	3.13"	—	None
65418‡	Shock	—	—	LS54	LS54	13.98"	21.75"	7.77"	—	None

† Bumper Stop Unit. Dimension Shown at Bumper Contact

‡ Hydraulic Lockout Unit. Dimension Shown is Metal-to-Metal, Subtract Approximately 5/8" (.62) from the Extended Length for Start-of-Engagement.

MOUNTING & LENGTH SPECIFICATIONS

Part No.	Part Type	STRUT BODY		END CODE		LENGTHS			Spring (Rate)	Parts Pack(s)
		Type	Length	Upper	Lower	Comp.	Ext.	Trav.		
65419†	Shock	—	—	LS54	LS54	11.63"	17"	5.38"	—	None
65420†	Shock	—	—	LS54	LS54	18.09"	29.98"	11.89"	—	None
65421†	Shock	—	—	LS54	LS54	15.53"	24.84"	9.31"	—	None
65425‡	Shock	—	—	S6	LS54	12.99"	20.2"	7.21"	—	P01482
65427‡	Shock	—	—	LS54	LS54	19.06"	31.91"	12.85"	—	None
65428‡	Shock	—	—	LS54	LS54	16.32"	26.31"	9.99"	—	None
65429‡	Shock	—	—	L3	L3	15.88"	24.75"	8.88"	—	None
65430‡	Shock	—	—	L4	L4	13.32"	19.9"	6.58"	—	None
65431†	Shock	—	—	LS54	LS54	15.31"	24.31"	9"	—	None
65432‡	Shock	—	—	LS54	LS54	13.69"	21.08"	7.39"	—	None
65433‡	Shock	—	—	LS54	LS54	13.59"	20.61"	7.02"	—	None
65434‡	Shock	—	—	L3	L3	13.58"	20.86"	7.28"	—	None
65435‡	Shock	—	—	L4	L4	17.88"	28.25"	10.38"	—	None
65436‡	Shock	—	—	S6	S6	11.38"	16.88"	5.5"	—	P01482
65439‡	Shock	—	—	L4	L4	15.13"	21.5"	6.38"	—	None
65440‡	Shock	—	—	S6	L4	16.13"	24.25"	8.13"	—	P01482
65442‡	Shock	—	—	L4	L4	16.98"	26.25"	9.27"	—	None
65444‡	Shock	—	—	S6	L4	14.97"	23.81"	8.84"	—	P01482
65448‡	Shock	—	—	L4	L4	16.98"	26.2"	9.22"	—	None
65449‡	Shock	—	—	L4	L4	15.75"	23.48"	7.73"	—	None
65451†	Shock	—	—	LS54	LS54	13.38"	20.36"	6.99"	—	None
65453‡	Shock	—	—	LS54	LS54	16.95"	27.6"	10.65"	—	None
65455‡	Shock	—	—	L4	L4	14.38"	21.38"	7"	—	None
65456‡	Shock	—	—	L4	L4	20.25"	32.88"	12.63"	—	None
65458‡	Shock	—	—	LS54	LS54	12.25"	17.63"	5.38"	—	None
65459‡	Shock	—	—	LS54	LS54	17.38"	28.44"	11.06"	—	None
65463‡	Shock	—	—	L4	L4	19.3"	31.97"	12.67"	—	None
65465‡	Shock	—	—	LS54	LS54	10.34"	14.33"	3.98"	—	None
65466‡	Shock	—	—	LS54	LS54	15.74"	25.19"	9.45"	—	None
65468‡	Shock	—	—	S6	S6	15.63"	26"	10.38"	—	P01482
65472‡	Shock	—	—	L4	S6	15.13"	23.7"	8.58"	—	P01482
65474‡	Shock	—	—	L4	L4	13.63"	20"	6.38"	—	None
65475‡	Shock	—	—	LS53	S6	17.25"	28"	10.75"	—	P01482
65478‡	Shock	—	—	LS54	LS54	15.02"	23.75"	8.73"	—	None
65479‡	Shock	—	—	LS54	LS54	15.75"	25.22"	9.47"	—	None
65480‡	Shock	—	—	LS54	S6	15.97"	26.1"	10.13"	—	P01482
65481†	Shock	—	—	LS54	LS54	16.51"	26.71"	10.2"	—	None
65482‡	Shock	—	—	LS54	LS54	17.43"	28.45"	11.02"	—	None
65483‡	Shock	—	—	LS75	LS75	18.13"	29.5"	11.38"	—	None
65484‡	Shock	—	—	LS54	LS54	18.12"	30"	11.88"	—	None
65485‡	Shock	—	—	LS54	LS54	18.76"	31.25"	12.49"	—	None
65486‡	Shock	—	—	LS61	LS62	15.63"	24.98"	9.36"	—	None
65487‡	Shock	—	—	LS53	LS53	15.5"	24.74"	9.24"	—	None
65488‡	Shock	—	—	LS53	LS53	17.96"	26.54"	8.59"	—	None
65489‡	Shock	—	—	LS59	LS60	13.5"	19.5"	6"	—	None
65490‡	Shock	—	—	LS59	LS60	15"	22.91"	7.91"	—	None
65492‡	Shock	—	—	LS61	LS61	14.5"	22.5"	8"	—	None
65493‡	Shock	—	—	LS54	LS54	12.08"	17.18"	5.1"	—	None
65494‡	Shock	—	—	LS61	LS62	15.5"	24.81"	9.31"	—	None
65495‡	Shock	—	—	LS87	LS80	18.36"	30.5"	12.14"	—	None
65497‡	Shock	—	—	LS53	LS53	13.15"	18.31"	5.16"	—	None
65499‡	Shock	—	—	LS53	LS54	18.65"	25.37"	6.71"	—	None
65500‡	Shock	—	—	LS54	LS54	11.86"	17.5"	5.64"	—	None
65501†	Shock	—	—	LS54	LS54	11.78"	17.34"	5.56"	—	None
65502‡	Shock	—	—	LS54	LS54	10.99"	15.75"	4.76"	—	None
65503‡	Shock	—	—	LS54	LS54	14.3"	22.13"	7.83"	—	None
65504‡	Shock	—	—	LS54	LS87	15.17"	24.13"	8.95"	—	P01471
65505‡	Shock	—	—	LS75	LS75	17.4"	28.53"	11.13"	—	None
65506‡	Shock	—	—	LS54	LS75	15.75"	25.22"	9.47"	—	None
65507‡	Shock	—	—	LS62	S6	13.77"	21.86"	8.09"	—	P01482
65508‡	Shock	—	—	LS62	S6	14.8"	23.92"	9.13"	—	P01482

† Bumper Stop Unit. Dimension Shown at Bumper Contact

‡ Hydraulic Lockout Unit. Dimension Shown is Metal-to-Metal, Subtract Approximately 5/8" (.62) from the Extended Length for Start-of-Engagement.

MOUNTING & LENGTH SPECIFICATIONS

Part No.	Part Type	STRUT BODY		END CODE		LENGTHS			Spring (Rate)	Parts Pack(s)
		Type	Length	Upper	Lower	Comp.	Ext.	Trav.		
65509‡	Shock	—	—	LS54	LS54	9.13"	12.06"	2.94"	—	None
65510‡	Shock	—	—	LS54	LS54	9.75"	13.25"	3.5"	—	None
65511‡	Shock	—	—	LS54	LS54	10.34"	14.5"	4.16"	—	None
65512‡	Shock	—	—	LS54	LS54	11.06"	15.91"	4.85"	—	None
65513‡	Shock	—	—	LS54	LS54	12.96"	19.5"	6.54"	—	None
65514‡	Shock	—	—	LS54	LS54	16.19"	25.92"	9.73"	—	None
65519‡	Shock	—	—	LS54	LS54	13.3"	20.06"	6.77"	—	None
65522‡	Shock	—	—	LS53	LS53	17.41"	28.59"	11.19"	—	None
65523‡	Shock	—	—	SPEC	S6	12.75"	19.75"	7"	—	P01482
65524‡	Shock	—	—	LS87	S6	11.8"	17.86"	6.06"	—	P01482
65525‡	Shock	—	—	LS102	LS102	10.84"	15.25"	4.41"	—	None
65526‡	Shock	—	—	LS59	LS86	18.63"	30.69"	12.06"	—	None
65527‡	Shock	—	—	LS53	LS86	13.8"	21.25"	7.45"	—	None
65528‡	Shock	—	—	S6	S6	15.94"	26.31"	10.38"	—	P01482
65529‡	Shock	—	—	LS59	LS86	15.91"	25.39"	9.49"	—	None
65530	Shock	—	—	LS69	LS86	14.02"	21.36"	7.34"	—	None
65531	Shock	—	—	L4	L4	10.51"	14.13"	3.62"	—	None
65532	Shock	—	—	LS69	LS87	15.17"	23.57"	8.95"	—	None
65533‡	Shock	—	—	LS53	LS53	15.06"	23.67"	8.61"	—	None
65534‡	Shock	—	—	S6	L4	15.81"	23.96"	8.15"	—	P01482
65535‡	Shock	—	—	LS53	LS54	13.47"	20.68"	7.21"	—	None
65536	Shock	—	—	LS69	LS61	15.22"	24.18"	8.96"	—	None
65537	Shock	—	—	LS69	LS87	14.09"	21.94"	7.85"	—	None
65538	Shock	—	—	LS69	LS61	14.86"	23.38"	8.52"	—	None
65539	Shock	—	—	LS69	LS87	14.56"	22.89"	8.3"	—	None
65541	Shock	—	—	LS95	LS95	13.78"	21.31"	7.53"	—	None
65542	Shock	—	—	LS75	LS75	13.93"	21.65"	7.72"	—	None
65543‡	Shock	—	—	LS61	LS98	14.66"	22.81"	8.15"	—	None
65546	Shock	—	—	LS83	LS84	13.78"	21.3"	7.52"	—	None
65547	Shock	—	—	LS80	LS52	15.65"	24.61"	8.96"	—	None
66101	Shock	—	—	LS80	LS80	7.56"	9.96"	2.4"	—	None
66102	Shock	—	—	LS79	LS79	8.56"	11.96"	3.4"	—	None
66104	Shock	—	—	LS14	LS14	7.25"	9.38"	2.13"	—	None
66105	Shock	—	—	LS39	LS41	7.88"	10.88"	3"	—	None
66108	Shock	—	—	LS89	LS44	8.38"	10.25"	1.88"	—	None
66109	Shock	—	—	LS77	LS77	8"	9.38"	1.38"	—	None
66112	Shock	—	—	LS76	LS76	8.25"	11"	2.75"	—	None
66115	Shock	—	—	LS29	S4	8.25"	11.38"	3.13"	—	P01135
66116	Shock	—	—	LS79	S4	8.63"	10.38"	1.75"	—	P01135
66117†	Shock	—	—	LS37	S4	7.91"	9.41"	1.5"	—	P01135
66118	Shock	—	—	LS84	L1	8.33"	10.33"	2"	—	None
66120	Shock	—	—	LS23	LS23	6.5"	8.5"	2"	—	None
66121	Shock	—	—	LS84	L1	9.71"	11.82"	2.11"	—	None
66122	Shock	—	—	LS84	L1	8.33"	10.33"	2"	—	None
66123	Shock	—	—	LS79	LS80	7.25"	9.38"	2.13"	—	None
66124	Shock	—	—	LS96	LS97	8.63"	10.38"	1.75"	—	None
66125	Shock	—	—	LS98	LS80	9.96"	12.82"	2.88"	—	None
66126	Shock	—	—	LS14	LS14	7.36"	9.38"	2.02"	—	None
66138†	Shock	—	—	L3	L3	19.72"	32.73"	13.02"	—	None
66142†	Shock	—	—	LS33	LS33	8.33"	10.33"	2"	—	None
66143	Shock	—	—	L1	L1	11.75"	18.7"	6.95"	—	P00019
66145	Shock	—	—	LS79	LS79	9.13"	13.13"	4"	—	None
66147	Shock	—	—	LS77	LS77	8.63"	10.38"	1.75"	—	None
66149	Shock	—	—	LS37	LS37	9.25"	14"	4.75"	—	None
66157	Shock	—	—	XP7	S4	7.13"	9.75"	2.63"	—	P01134
66159	Shock	—	—	LS24	LS24	8.47"	11.58"	3.09"	—	None
66160	Shock	—	—	LS77	LS77	7.63"	9.88"	2.25"	—	None
66161	Shock	—	—	LS77	LS77	8.13"	10.88"	2.75"	—	None
66162	Shock	—	—	LS73	LS73	6.38"	7.88"	1.5"	—	None
66178	Shock	—	—	LS14	LS72	6.63"	8.38"	1.75"	—	None
66182	Shock	—	—	XP7	S4	5.75"	7.38"	1.63"	—	P01098

† Bumper Stop Unit. Dimension Shown at Bumper Contact

‡ Hydraulic Lockout Unit. Dimension Shown is Metal-to-Metal, Subtract Approximately 5/8" (.62) from the Extended Length for Start-of-Engagement.

MOUNTING & LENGTH SPECIFICATIONS

Part No.	Part Type	STRUT BODY		END CODE		LENGTHS			Spring (Rate)	Parts Pack(s)
		Type	Length	Upper	Lower	Comp.	Ext.	Trav.		
66189	Shock	—	—	XP8	S4	8.75"	10.88"	2.13"	—	P01134
66193	Shock	—	—	LS8	LS8	7.38"	9.75"	2.38"	—	None
66195	Shock	—	—	LS4	LS4	10.5"	14"	3.5"	—	None
66196†	Shock	—	—	LS37	S4	10.12"	13.84"	3.72"	—	P01136
66201	Shock	—	—	LS77	LS34	9.6"	13.42"	3.82"	—	None
66202	Shock	—	—	LS77	S6	9.32"	12.85"	3.53"	—	P01482
66203	Shock	—	—	LS98	LS80	9.23"	12.26"	3.03"	—	None
66204‡	Shock	—	—	LS14	LS14	8.64"	11.43"	2.79"	—	None
66205†	Shock	—	—	LS53	LS80	9.2"	10.76"	1.5"	—	None
66206†	Shock	—	—	LS37	L1	9.56"	12.73"	3.17"	—	None
66402	Shock	—	—	LS54	LS53	15.63"	25.13"	9.5"	—	None
66403	Shock	—	—	LS71	S6	12.88"	20.88"	8"	—	P01482
66405	Shock	—	—	LS71	S6	11.88"	18.88"	7"	—	P01482
66407‡	Shock	—	—	S6	LS54	13.88"	22.19"	8.31"	—	P01482
66408	Shock	—	—	LS39	LS39	12.55"	19.99"	7.44"	—	None
66412	Shock	—	—	LS53	LS53	11.67"	18.12"	6.45"	—	None
66413	Shock	—	—	L3	L3	12.17"	19.13"	6.95"	—	None
66414	Shock	—	—	LS47	LS47	12.92"	20.63"	7.7"	—	None
66415	Shock	—	—	LS47	LS28	12.99"	20.81"	7.82"	—	None
66417	Shock	—	—	LS48	LS43	12.69"	20.22"	7.53"	—	None
66419‡	Shock	—	—	LS61	LS61	14.44"	22.63"	8.19"	—	None
66420	Shock	—	—	LS44	LS44	12.73"	19.51"	6.77"	—	None
66422‡	Shock	—	—	LS53	LS53	13.28"	20.31"	7.03"	—	None
66423	Shock	—	—	L4	L4	16.27"	26.72"	10.45"	—	None
66424‡	Shock	—	—	S6	S6	12.05"	18.8"	6.75"	—	P01482
66428‡	Shock	—	—	S6	L4	16.61"	27.38"	10.77"	—	P01482
66429‡	Shock	—	—	S6	L4	14.98"	23.99"	9.01"	—	P01482
66431‡	Shock	—	—	LS61	LS62	15.69"	25.06"	9.38"	—	None
66433‡	Shock	—	—	LS86	LS86	14.72"	22.88"	8.16"	—	None
66436‡	Shock	—	—	LS87	LS80	18.31"	30.45"	12.14"	—	None
66437	Shock	—	—	LS54	LS54	14.05"	22.58"	8.76"	—	None
66438‡	Shock	—	—	LS54	LS54	11.05"	16.07"	5.02"	—	None
66439†	Shock	—	—	LS46	LS30	15.93"	25.96"	10.03"	—	None
66440	Shock	—	—	LS51	LS51	12.38"	19.73"	7.35"	—	None
66442	Shock	—	—	LS54	LS54	10.72"	15.4"	4.68"	—	None
66443	Shock	—	—	LS54	LS54	10.94"	15.71"	4.77"	—	None
66444†	Shock	—	—	L1	L1	13.48"	18.55"	5.07"	—	None
66445	Shock	—	—	LS54	LS54	12.07"	19.4"	7.33"	—	None
66446	Shock	—	—	LS54	LS54	13.07"	21.4"	8.33"	—	None
66447†	Shock	—	—	LS53	LS38	18.4"	31"	12.5"	—	None
66448	Shock	—	—	LS54	LS54	14.45"	22.86"	8.41"	—	None
66449	Shock	—	—	LS51	LS51	12.38"	19.73"	7.35"	—	None
66450	Shock	—	—	LS43	LS28	12.41"	19.87"	7.46"	—	None
66451	Shock	—	—	LS46	LS30	15.93"	25.96"	10.03"	—	None
66452†	Shock	—	—	LS46	LS30	15.93"	25.96"	10.03"	—	None
66453	Shock	—	—	LS78	LS78	14.48"	21.9"	7.42"	—	None
66454	Shock	—	—	LS54	LS54	15.66"	25.4"	9.74"	—	None
66455	Shock	—	—	LS54	LS54	15.66"	25.4"	9.74"	—	None
66456	Shock	—	—	LS38	LS38	15.34"	23.74"	8.4"	—	None
66457	Shock	—	—	LS43	LS28	14.28"	22.14"	7.86"	—	None
66502†	Steering Damper	—	—	LS54	LS54	14.05"	22.58"	8.53"	—	None
66504	Steering Damper	—	—	LB1	LB1	13.94"	22.47"	8.53"	—	None
66505†	Steering Damper	—	—	LS54	LS54	16.98"	28.56"	11.58"	—	None
66506	Steering Damper	—	—	LS54	LS54	13.9"	22.68"	8.78"	—	None
66601	Shock	—	—	S4	LS82	13.5"	22.88"	9.38"	—	P01136
66602	Shock	—	—	S4	L1	12.5"	20.88"	8.38"	—	P01134
66603	Shock	—	—	S5	S5	12.25"	20.13"	7.88"	—	P01167
66605	Shock	—	—	S5	S5	12.86"	21.39"	8.53"	—	P01303
66606‡	Shock	—	—	LS53	LS53	17.06"	27.17"	10.11"	—	None
66607‡	Shock	—	—	LS54	LS54	9.94"	13.47"	3.53"	—	None
66608‡	Shock	—	—	LS54	LS54	11.69"	16.83"	5.14"	—	None

† Bumper Stop Unit. Dimension Shown at Bumper Contact

‡ Hydraulic Lockout Unit. Dimension Shown is Metal-to-Metal, Subtract Approximately 5/8" (.62) from the Extended Length for Start-of-Engagement.

MOUNTING & LENGTH SPECIFICATIONS

Part No.	Part Type	STRUT BODY		END CODE		LENGTHS			Spring (Rate)	Parts Pack(s)
		Type	Length	Upper	Lower	Comp.	Ext.	Trav.		
66609	Shock	—	—	LS54	S6	13.38"	21.75"	8.38"	—	P01482
66610‡	Shock	—	—	LS54	LS54	12.58"	18.7"	6.13"	—	None
66613‡	Shock	—	—	LS54	LS54	17.06"	27.04"	9.98"	—	None
66615	Shock	—	—	LS71	S6	13.63"	22.25"	8.63"	—	P01482
66618	Shock	—	—	L3	L3	13.38"	21.5"	8.13"	—	None
66624	Shock	—	—	L3	L3	15.5"	25.63"	10.13"	—	None
66626	Shock	—	—	S6	S6	15.13"	25.88"	10.75"	—	P01482
66627‡	Shock	—	—	LS54	LS54	10.44"	14.45"	4.02"	—	None
66628	Shock	—	—	S6	S6	16.88"	29.5"	12.63"	—	P01482
66629	Shock	—	—	L3	L3	18.63"	32.13"	13.5"	—	P00119
66633‡	Shock	—	—	LS54	LS54	13.81"	21.2"	7.39"	—	None
66634‡	Shock	—	—	LS54	LS54	12.19"	17.86"	5.67"	—	None
66636‡	Shock	—	—	LS54	LS54	13.44"	20.45"	7.02"	—	None
66637	Shock	—	—	L1/CP5	LS54	14.13"	23"	8.88"	—	P00019
66638‡	Shock	—	—	LS54	LS54	16.69"	26.83"	10.14"	—	None
66639	Shock	—	—	S4	L1	13.25"	22"	8.75"	—	P01136
66646	Shock	—	—	L3	L3	15.25"	25"	9.75"	—	P00119
66648	Shock	—	—	LS54	S6	13.71"	21.35"	7.64"	—	P01482
66653	Shock	—	—	S4	L3	13.96"	23.25"	9.29"	—	P01134
66656‡	Shock	—	—	LS54	S6	14.47"	22.97"	8.5"	—	P01482
66658‡	Shock	—	—	S6	LS54	15.05"	24.07"	9.02"	—	P01482
66660‡	Shock	—	—	LS54	L4	12.72"	19.21"	6.49"	—	None
66666	Shock	—	—	LS38	LS38	13.88"	22.88"	9"	—	None
66668	Shock	—	—	L3	L3	15.72"	26"	10.28"	—	P00119
66671	Shock	—	—	LS54	LS54	16"	26.75"	10.75"	—	None
66675	Shock	—	—	S5	L3	13.38"	22"	8.63"	—	P01167
66683‡	Shock	—	—	LS53	LS53	15.31"	24.07"	8.76"	—	None
66684	Shock	—	—	L4	L4	14.89"	24.09"	9.2"	—	None
66691	Shock	—	—	LS41	LS53	15"	24"	9"	—	P01322
66692	Shock	—	—	LS71	S6	13.75"	22.63"	8.88"	—	P01482
66697	Shock	—	—	LS54	LS40	14.63"	24.25"	9.63"	—	None
66707	Shock	—	—	L4	L4	16.02"	25.47"	9.45"	—	None
66710‡	Shock	—	—	LS54	LS54	18.06"	29.7"	11.64"	—	None
66713	Shock	—	—	S5	LS75	18.25"	31.88"	13.63"	—	P01167
66714	Shock	—	—	L3	L3	14.38"	23.38"	9"	—	P00119,P00936
66715	Shock	—	—	LS80	S6	14.13"	23.13"	9"	—	P01482
66717	Shock	—	—	S4	L3	14.25"	23.42"	9.17"	—	P01134,P00120,P00936
66719	Shock	—	—	LS54	LS54	19.38"	33.5"	14.13"	—	None
66721	Shock	—	—	L3	L3	15.44"	25.29"	9.85"	—	None
66722	Shock	—	—	S4	L3	14.45"	24.3"	9.85"	—	P01134, P00120
66810	Shock	—	—	L2	L2	17.5"	30.25"	12.75"	—	None
66811	Shock	—	—	L3	L3	16.17"	26.56"	10.39"	—	P00119
66828	Shock	—	—	L3	L3	13.13"	21.13"	8"	—	P00575
66829	Shock	—	—	S4	S4	11.5"	18.75"	7.25"	—	P01136
66833‡	Shock	—	—	LS54	LS54	15.81"	25.2"	9.39"	—	None
66841	Shock	—	—	L3	L3	14.38"	23.5"	9.13"	—	P00575
66858	Shock	—	—	L2	L2	12"	19.25"	7.25"	—	None
66859	Shock	—	—	L2	L2	16.13"	27.13"	11"	—	None
66860‡	Shock	—	—	L3	L3	15.16"	24.56"	9.41"	—	P00119
66861†	Shock	—	—	L3	L3	17.31"	28.69"	11.38"	—	None
66863	Shock	—	—	L3	L3	18"	30.75"	12.75"	—	P00119
66864	Shock	—	—	L4	L4	17.68"	28.8"	11.12"	—	None
66878	Shock	—	—	LS54	LS54	14.56"	23.91"	9.34"	—	None
66884‡	Shock	—	—	LS54	LS54	17.19"	27.95"	10.77"	—	None
66886‡	Shock	—	—	LS54	LS54	13.95"	21.86"	7.91"	—	None
66891	Shock	—	—	L4	L4	16.3"	26.72"	10.42"	—	None
66893‡	Shock	—	—	LS54	LS54	11.94"	17.45"	5.52"	—	None
66897‡	Shock	—	—	LS54	LS54	15.44"	24.33"	8.89"	—	None
66902	Shock	—	—	L1	L1	14.13"	23.88"	9.75"	—	None
66903	Shock	—	—	S4	S4	12.75"	21.75"	9"	—	P01134
66913	Shock	—	—	L1/CP5	LS54	15"	24.88"	9.88"	—	P00019

† Bumper Stop Unit. Dimension Shown at Bumper Contact

‡ Hydraulic Lockout Unit. Dimension Shown is Metal-to-Metal, Subtract Approximately 5/8" (.62) from the Extended Length for Start-of-Engagement.

MOUNTING & LENGTH SPECIFICATIONS

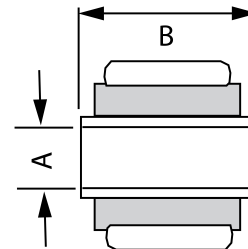
Part No.	Part Type	STRUT BODY		END CODE		LENGTHS			Spring (Rate)	Parts Pack(s)
		Type	Length	Upper	Lower	Comp.	Ext.	Trav.		
66921	Shock	—	—	S5	S5	13.5"	23.63"	10.13"	—	P01303
66923	Shock	—	—	S5	S5	14"	24.13"	10.13"	—	P01303
66924	Shock	—	—	S5	LS53	16.13"	27.5"	11.38"	—	P01303
66956†	Shock	—	—	LS53	LS53	15.73"	25.41"	9.68"	—	None
66957‡	Shock	—	—	L4	L4	15.28"	23.69"	8.41"	—	None
66966	Shock	—	—	L4	S6	15.5"	25.25"	9.75"	—	P01482
66969‡	Shock	—	—	LS54	LS54	15.43"	24.45"	9.02"	—	None
71053	Strut	SS4	18.48"	—	—	18.98"	24.13"	5.15"	—	None
71054†	Strut	B11	14.24"	—	—	14.74"	21.34"	6.6"	—	None
71055	Strut	B4	14.42"	—	—	14.92"	21.14"	6.22"	—	None
71056	Strut	B11	11.9"	—	—	12.4"	18.86"	6.46"	—	None
71057	Strut	B11	11.9"	—	—	12.4"	18.86"	6.46"	—	None
71058†	Strut	B4	13.71"	—	—	14.21"	20.08"	5.87"	—	M17130024
71059	Strut	B9	14.62"	—	—	15.12"	21.1"	5.98"	—	None
71060	Strut	B9	14.62"	—	—	15.12"	21.1"	5.98"	—	None
71061	Strut	B11	13"	—	—	13.5"	19.7"	6.2"	—	None
71062	Strut	B11	13"	—	—	13.5"	16.7"	3.2"	—	None
71063	Strut	B9	14.07"	—	—	14.57"	20.08"	5.51"	—	None
71064	Strut	B9	14.07"	—	—	14.57"	20.08"	5.51"	—	None
71100	Strut	SS4	13"	—	—	13.56"	18.39"	4.83"	—	None
71101†	Strut	SS2	10.52"	—	—	11.02"	15.35"	4.33"	—	P00906
71102†	Strut	SS3	10.49"	—	—	10.99"	15.56"	4.57"	—	P01614
71103	Strut	SS2	10.49"	—	—	10.99"	15.56"	4.57"	—	P01614
71105	Strut	SS2	11.5"	—	—	12.52"	16.44"	3.92"	—	P00762
71106	Strut	SS2	11.5"	—	—	12.52"	16.44"	3.92"	—	P00762
71107	Strut	SS2	10"	—	—	12"	17.5"	5.5"	—	P00906
71108	Strut	SS2	9"	—	—	11"	15.88"	4.88"	—	P00906
71109	Strut	SS2	10"	—	—	10.49"	19.49"	9"	—	None
71110	Strut	SS2	14.45"	—	—	14.59"	19.49"	4.9"	—	None
71111	Strut	SS4	14.84"	—	—	15.43"	21.19"	5.76"	—	P01746
71112	Strut	SS2	11.5"	—	—	12.01"	16.46"	4.45"	—	P00522
71113	Strut	SS2	11.32"	—	—	11.82"	17.74"	5.92"	—	P00762
71114	Strut	SS2	10"	—	—	10.55"	15.04"	4.49"	—	P00906
71115	Strut	SS2	15.68"	—	—	16.18"	22.4"	6.22"	—	P00906
71116	Strut	B3	18.63"	—	—	19.13"	24.41"	5.28"	—	P00762
71117	Strut	B3	18.63"	—	—	19.13"	24.41"	5.28"	—	P00762
71119	Strut	SS2	17.8"	—	—	17.76"	23.55"	5.76"	—	P01613
71122	Strut	SS4	14.15"	—	—	14.65"	20.16"	5.51"	—	P00906
71123	Strut	SS2	14.82"	—	—	15.32"	22.6"	7.29"	—	P00906
71124†	Strut	SS2	18.82"	—	—	19.32"	20.42"	1.1"	—	P01611
71125	Strut	SS3	13.02"	—	—	13.52"	19.69"	6.17"	—	P01611
71126	Strut	SS2	12.63"	—	—	13.13"	20.64"	7.51"	—	P00906
71128	Strut	B11	16.28"	—	—	12.46"	19.5"	7.04"	—	P00762
71130	Strut	B11	11.59"	—	—	12.09"	19.6"	7.51"	—	P00762
71131	Strut	B11	11.59"	—	—	12.09"	19.6"	7.51"	—	P00762
71133	Strut	SS2	15.02"	—	—	15.52"	18.52"	3"	—	P00839
71134	Strut	SS2	15.02"	—	—	15.52"	18.52"	3"	—	P00839
71135	Strut	B11	13.81"	—	—	14.14"	20.81"	6.67"	—	P00762
71136	Strut	B11	13.81"	—	—	14.14"	20.81"	6.67"	—	P00762
71137	Strut	SPEC	—	—	—	17.68"	22.25"	4.57"	—	P01613
71138	Strut	SS1	15.65"	—	—	16.15"	21.3"	5.15"	—	P01388
71139†	Strut	SS1	14.93"	—	—	15.43"	21.11"	5.68"	—	P01388
71140	Strut	SS2	15.88"	—	—	16.38"	21.18"	4.8"	—	P01388
71141	Strut	SS2	16.6"	—	—	17.17"	21.64"	4.47"	—	P01769
71143	Strut	B3	10.56"	—	—	11.06"	14.92"	3.86"	—	None
71144	Strut	B3	10.56"	—	—	11.06"	14.92"	3.86"	—	None
71145	Strut	SS2	12.13"	—	—	12.63"	18.88"	6.25"	—	None
71146	Strut	SS2	12.38"	—	—	12.88"	19.13"	6.25"	—	P00906
71147	Strut	SS2	11.06"	—	—	11.5"	17.31"	5.81"	—	P00906
71148	Strut	SS4	11.77"	—	—	12.75"	18.39"	5.64"	—	None
71202†	Strut	SS1	12.63"	—	—	13.25"	21.5"	8.25"	—	P01006

† Bumper Stop Unit. Dimension Shown at Bumper Contact

‡ Hydraulic Lockout Unit. Dimension Shown is Metal-to-Metal, Subtract Approximately 5/8" (.62) from the Extended Length for Start-of-Engagement.

Specifications — Shock Mount Codes

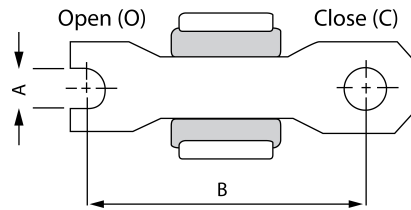
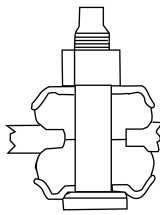
Mount Code	Sleeve ID (A)	Sleeve OAL (B)	Mount Code	Sleeve ID (A)	Sleeve OAL (B)	Mount Code	Sleeve ID (A)	Sleeve OAL (B)
LS1	10MM	15/16"	LS49	5/8"-16MM	1 3/16"	LS97	1/2"	2 3/4"
LS2	10MM	1"	LS50	5/8"-16MM	1 1/2"	LS98	5/8"-16MM	3"
LS3	10MM	1 1/4"	LS51	5/8"-16MM	1 9/16"	LS99	5/8"-16MM	3 1/4"
LS4	10MM	1 3/8"	LS52	5/8"-16MM	1 11/16"	LS100	1 1/8"	4"
LS5	10MM	1 7/16"	LS53	5/8"-16MM	2"	LS101	1 1/8"	2 5/8"
LS6	10MM	1 9/16"	LS54	3/4"	1 3/4"	LS102	7/8"	2 1/4"
LS7	10MM	1 5/8"	LS55	18MM	1 5/8"	LS103	1/2"	3 3/4"
LS8	10MM	2"	LS56	20MM	1 9/16"	LB1	1/2"	3/4"
LS9	10MM	2 1/8"	LS57	20MM	2"			
LS10	10MM	2 3/8"	LS58	20MM	2 7/16"			
LS11	10MM	3"	LS59	3/4"	3 1/16"			
LS12	7/16"	1 1/4"	LS60	3/4"	3 3/16"			
LS13	7/16"	1 5/16"	LS61	5/8"-16MM	4"			
LS14	7/16"	1 3/8"	LS62	5/8"-16MM	2 9/16"			
LS15	7/16"	1 7/16"	LS63	1/2"	1/2"			
LS16	7/16"	1 5/8"	LS64	21MM	1 5/16"			
LS17	7/16"	1 7/8"	LS65	1"	2"			
LS18	7/16"	2 1/8"	LS66	3/4"	1 3/8"			
LS19	7/16"	3 3/16"	LS67	3/4"	1 11/16"			
LS20	7/16"	3 3/8"	LS68	3/4"	1 7/8"			
LS21	12MM	1"	LS69	3/4"	1 5/16"			
LS22	12MM	1 1/8"	LS70	3/4"	2 1/4"			
LS23	12MM	1 1/4"	LS71	3/4"	2 3/4"			
LS24	12MM	1 3/8"	LS72	7/16"	2"			
LS25	12MM	1 7/16"	LS73	7/16"	2 1/2"			
LS26	12MM	1 1/2"	LS74	12MM	1 1/16"			
LS27	12MM	1 9/16"	LS75	20MM	1 3/4"			
LS28	12MM	1 5/8"	LS76	1/2"	2 3/8"			
LS29	12MM	1 3/4"	LS77	1/2"	2 7/16"			
LS30	12MM	1 7/8"	LS78	9/16"	1 1/2"			
LS31	12MM	2"	LS79	5/8"-16MM	1 3/8"			
LS32	12MM	2 1/8"	LS80	5/8"-16MM	1 3/4"			
LS33	12MM	2 5/16"	LS81	5/8"-16MM	1 7/8"			
LS34	12MM	2 7/8"	LS82	5/8"-16MM	1 1/2"			
LS35	1/2"	1 1/4"	LS83	18MM	2"			
LS36	1/2"	1 5/16"	LS84	12MM	2 3/8"			
LS37	1/2"	1 3/8"	LS85	5/8"-16MM	1 3/16"			
LS38	1/2"	1 1/2"	LS86	3/4"	2 5/16"			
LS39	1/2"	1 5/8"	LS87	5/8"-16MM	3 9/16"			
LS40	1/2"	1 11/16"	LS88	14MM	2 7/16"			
LS41	1/2"	2 1/4"	LS89	1"	1 3/4"			
LS42	14MM	1 5/16"	LS90	14MM	2 5/8"			
LS43	14MM	1 9/16"	LS91	14MM	1 3/4"			
LS44	14MM	1 7/8"	LS92	14MM	1 11/16"			
LS45	14MM	2 7/16"	LS93	18MM	3 1/4"			
LS46	14MM	3 1/8"	LS94	5/8"-16MM	2 3/4"			
LS47	9/16"	1 5/8"	LS95	20MM	2 3/8"			
LS48	9/16"	2 7/16"	LS96	1/2"	1 7/8"			



Specifications – Shock Mount Codes

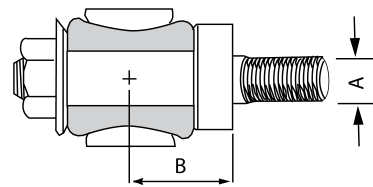
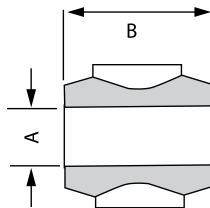
Stem Mount Code	Sleeve Length	Thread Pitch
S1	1 ³ / ₁₆ "	M10
S12	1 ³ / ₁₆ "	M10
S15	2 ⁵ / ₈ "	M10
S2	2"	M12
S3	2"	3/8"-24
S33	2"	3/8"-24
S34	2 ¹ / ₄ "	3/8"-24
S4	2 ³ / ₈ "	3/8"-16
S42	2 ³ / ₈ "	3/8"-16
S5	2 ⁵ / ₈ "	1/2"-13
S51	2 ⁵ / ₈ "	1/2"-13
S52	2 ⁵ / ₈ "	1/2"-20
S6	3 ⁵ / ₁₆ "	5/8"-11
S61	3 ⁵ / ₁₆ "	5/8"-11
S62	2 ¹ / ₂ "	5/8"-18
S7	1 ¹ / ₈ "	M8

Cross Pin Mount Code	X.Pin End Type	X.Pin Hole Diameter	X.Pin Length (Cntr to Cntr)
XP1	Open	5/16"	2 ³ / ₁₆ "
XP2	Open	5/16"	2 ³ / ₈ "
XP3	Open	5/16"	2 ⁷ / ₁₆ "
XP4	Closed	5/16"	2 ⁷ / ₁₆ "
XP5	Closed	5/16"	2 ¹ / ₂ "
XP6	Open	5/16"	2 ³ / ₄ "
XP7	Closed	5/16"	2 ⁷ / ₈ "
XP8	Open	5/16"	3"
XP9	Open	5/16"	3 ⁵ / ₈ "
XP10	Open	3/8"	2 ⁵ / ₈ "
XP11	Closed	3/8"	2 ³ / ₄ "
XP12	Open	3/8"	3 ³ / ₁₆ "
XP13	Closed	12MM	2 ¹⁵ / ₁₆ "
XP14	Closed	1/2"	3 ³ / ₈ "
XP15	Closed	1/2"	3 ³ / ₄ "
XP16	Closed	3/8"	4"

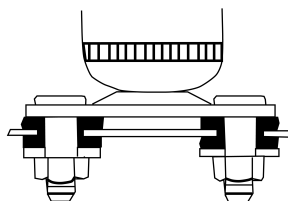


Loop Mount Code	Bushing ID (A)	Bushing OAL (B)
L1	5/8"	1 ⁵ / ₁₆ "
L2	11/16"	1 ⁹ / ₁₆ "
L3	3/4"	1 ⁹ / ₁₆ "
L4	1"	1 ³ / ₄ "
L5	1 ¹ / ₄ "	2 ⁹ / ₁₆ "
L6	1 ¹ / ₂ "	3 ¹ / ₄ "

Cantilever Mount Code	Stud Diameter (A)	Stud Length (B)
CP1	1/2"	1 ¹ / ₁₆ "
CP2	1/2"	1 ³ / ₁₆ "
CP3	1/2"	1 ⁵ / ₁₆ "
CP4	1/2"	1 ¹ / ₂ "
CP5	5/8"	1 ⁵ / ₁₆ "
CP5	5/8"	1 ⁵ / ₁₆ "

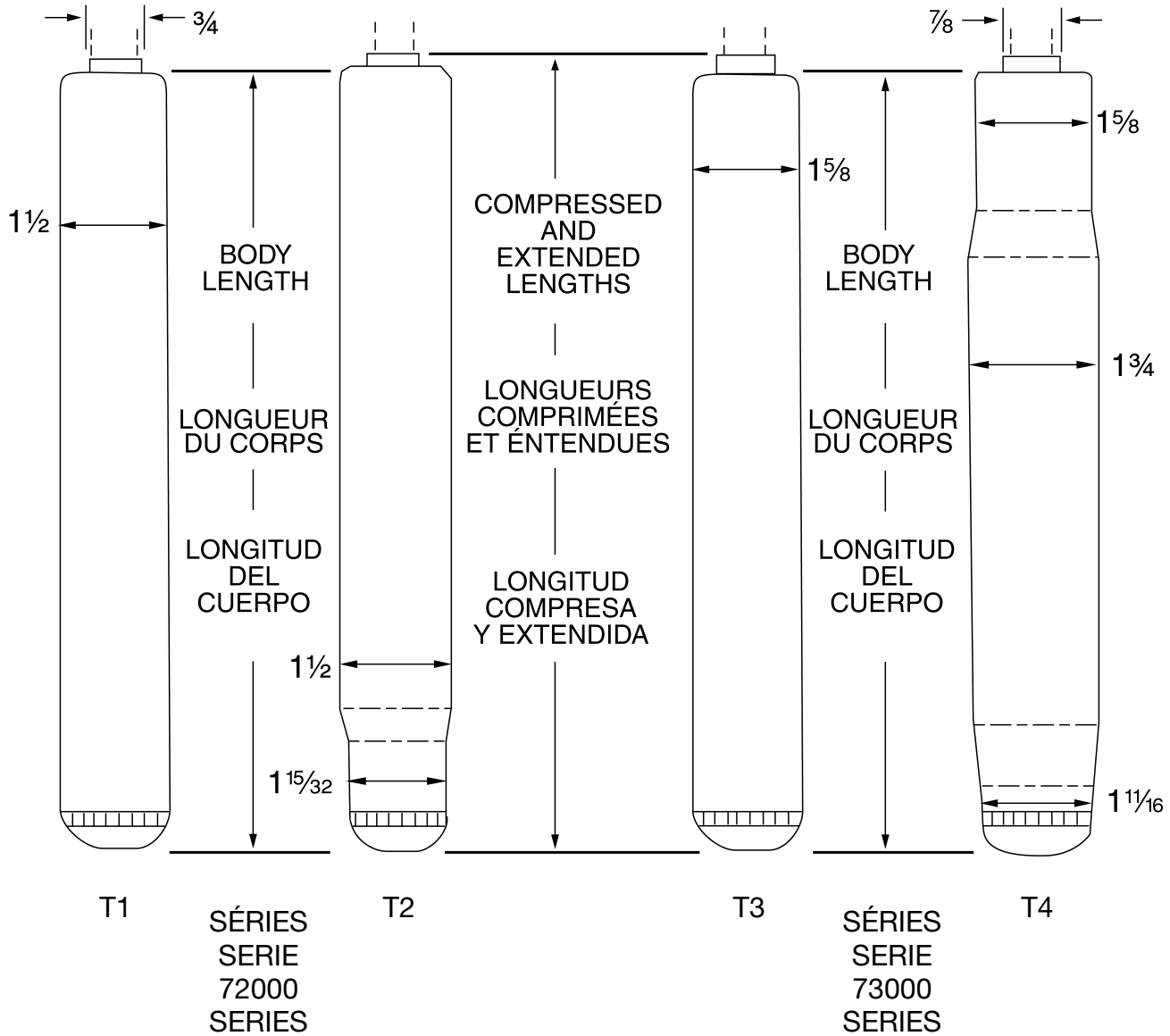


Special Mount	Mount Description
CLEV	Clevis Bracket Mount
SPEC	Special Mount
SP	Stud Plate Mount



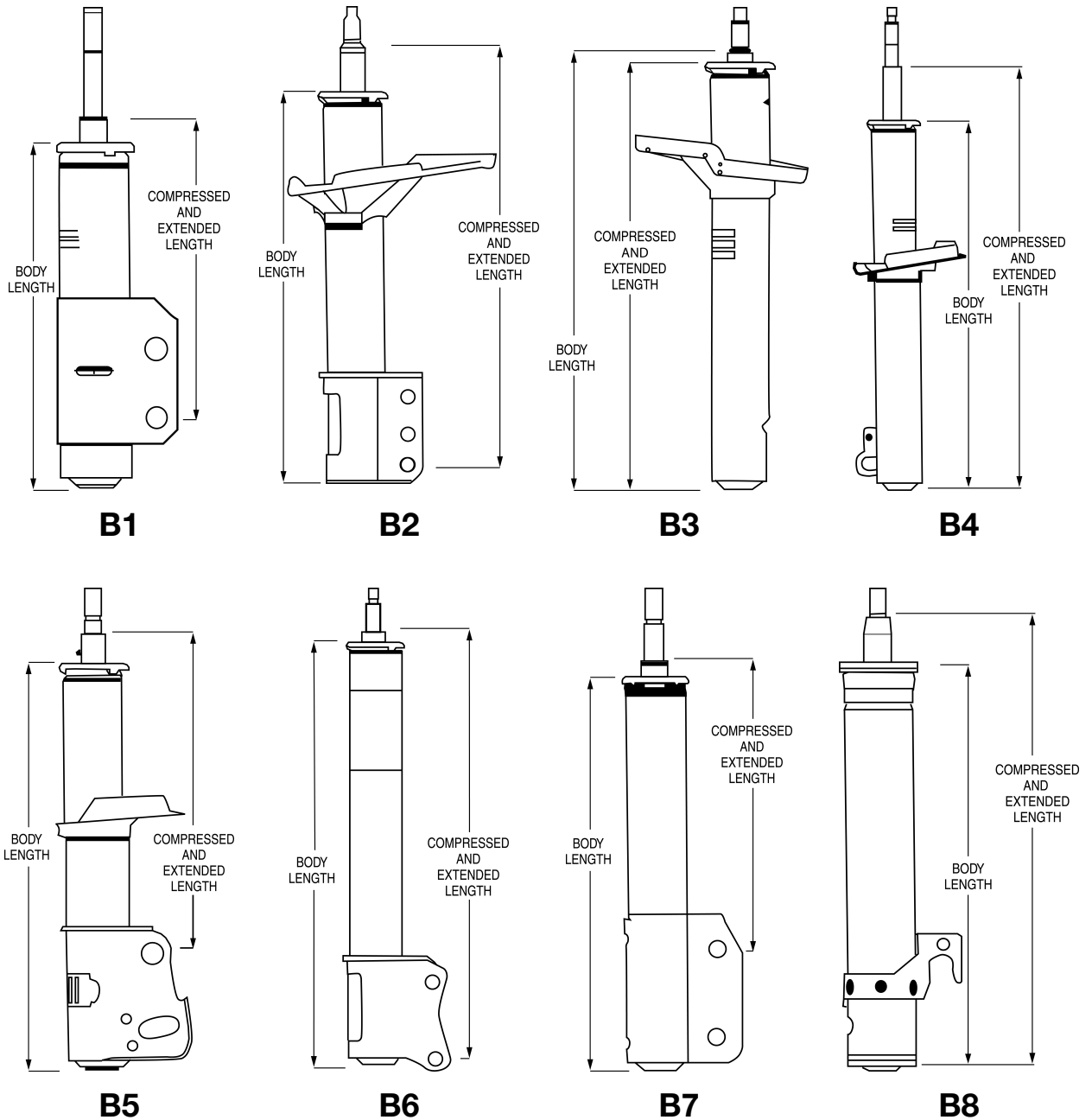
Specifications

REPLACEMENT CARTRIDGE DIMENSIONING DIMENSION DE LA CARTOUCHE DE REMPLACEMENT DIMENSIONES DEL CARTUCHO DE REPUESTO



Product specifications shown in this catalog are subject to change without notice.
Les données techniques des produits de ce catalogue peuvent être modifiées sans préavis.
Las especificaciones de los productos en este catálogo están sujetas a cambio sin previo aviso.

MOUNTING & LENGTH CHARTS REPLACEMENT UNITS MONTAGE ET LONGUEUR DES UNITÉS DE REMPLACEMENT TABLAS DE MONTAJE Y LONGITUD DE LAS UNIDADES DE REPUESTO



BODY LENGTH / LONGUEUR DU CORP / LONGITUD DEL CUERPO.

COMPRESSED AND EXTENDED LENGTH / LONGUEUR COMPRIMÉE ET ÉTENDUE / LONGITUD COMPRIMIDA Y EXTENDIDA.

NOTE/NOTA:

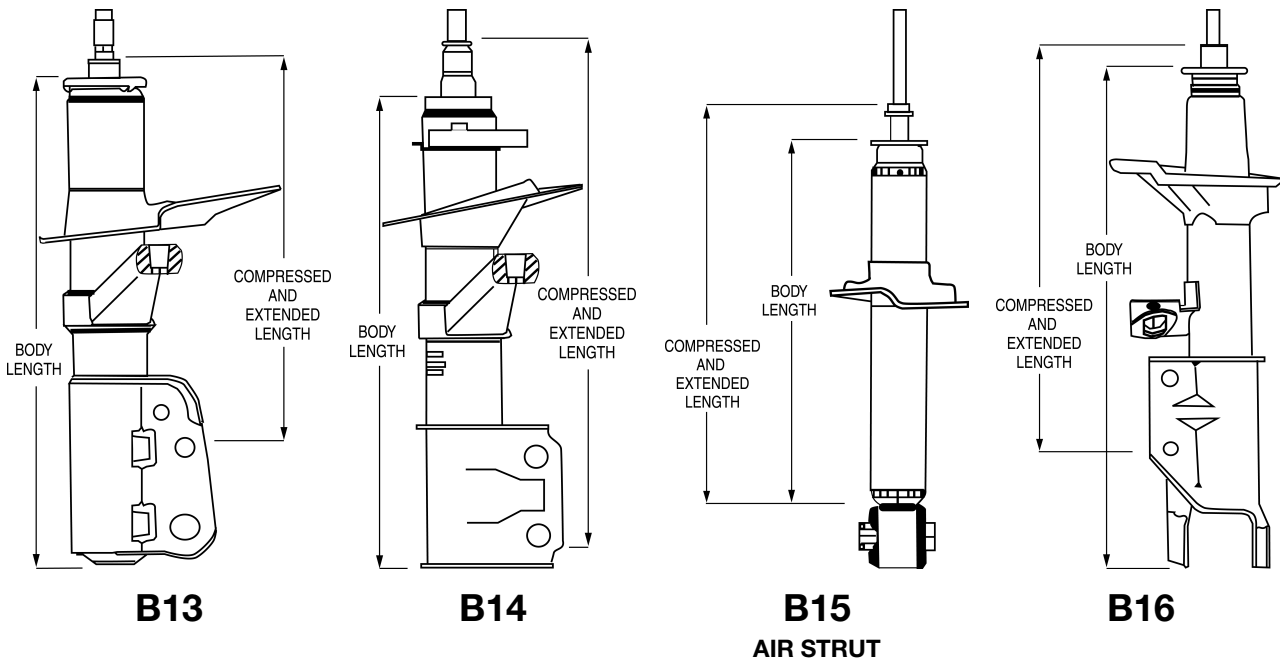
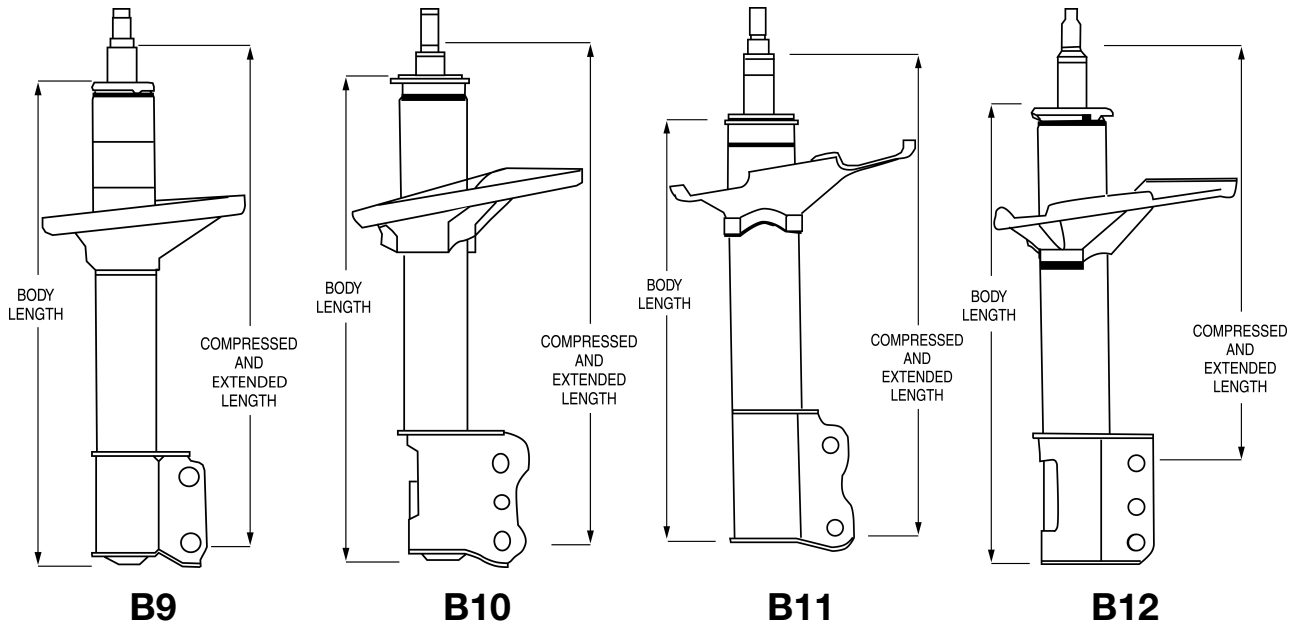
All Piston Rod Ends are Designed Special For Each Application.

Chaque extrémité de tige de piston est conçue spécialement pour chaque application.

Todos los extremos de la varas del pistón están diseñadas especialmente para cada aplicación.

Specifications

MOUNTING & LENGTH CHARTS REPLACEMENT UNITS MONTAGE ET LONGUEUR DES UNITÉS DE REMPLACEMENT TABLAS DE MONTAJE Y LONGITUD DE LAS UNIDADES DE REPUESTO



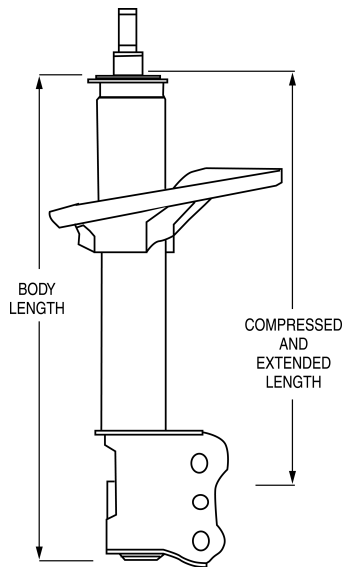
BODY LENGTH / LONGUEUR DU CORP / LONGITUD DEL CUERPO.

COMPRESSED AND EXTENDED LENGTH / LONGUEUR COMPRIMÉE ET ÉTENDUE / LONGITUD COMPRIMIDA Y EXTENDIDA.

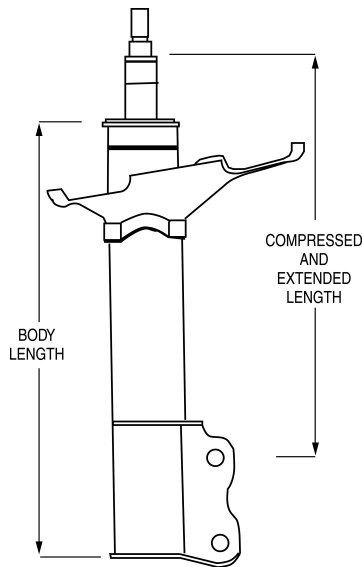
NOTE/NOTA:

All Piston Rod Ends are Designed Special For Each Application.
Chaque extrémité de tige de piston est conçue spécialement pour chaque application.
Todos los extremos de la varas del pistón están diseñadas especialmente para cada aplicación.

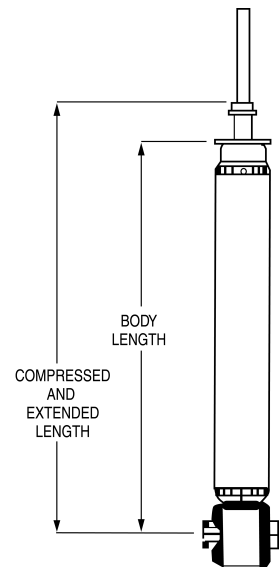
MOUNTING & LENGTH CHARTS REPLACEMENT UNITS MONTAGE ET LONGUEUR DES UNITÉS DE REMPLACEMENT TABLAS DE MONTAJE Y LONGITUD DE LAS UNIDADES DE REPUESTO



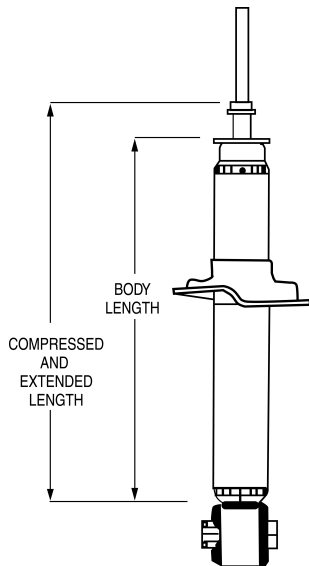
B17



B18

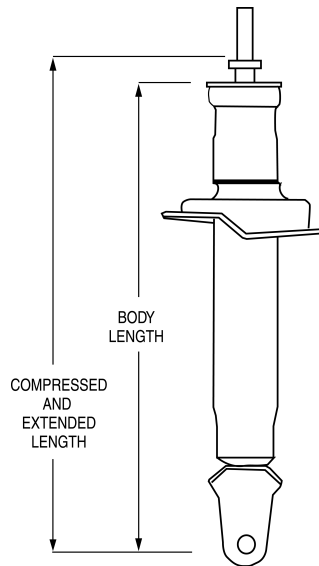


SS1



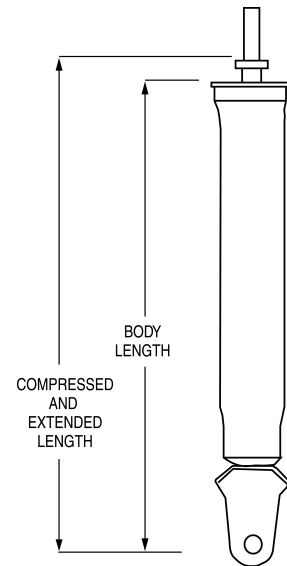
SS2

SS3 w/Dirt Shield Not Shown



SS4

SS5 w/Dirt Shield Not Shown



SS6

BODY LENGTH / LONGUEUR DU CORP / LONGITUD DEL CUERPO.

COMPRESSED AND EXTENDED LENGTH / LONGUEUR COMPRIMÉE ET ÉTENDUE / LONGITUD COMPRIMIDA Y EXTENDIDA.

NOTE/NOTA:

All Piston Rod Ends are Designed Special For Each Application.

Chaque extrémité de tige de piston est conçue spécialement pour chaque application.

Todos los extremos de la varas del pistón están diseñadas especialmente para cada aplicación.